

## ASSEMBLY INSTRUCTIONS WITH LENGTH ADJUSTMENT



Measure the outer diameter of the pipe. Cut out the damaged pipe section vertically to the pipe. Deburr the pipe ends on the inside and outside of the pipe. In case of ovalities appropriate measures for back rounding have to be carried out.



Measure the inner diameter of the pipe with the gauge. Push the suitable support sleeves into both pipe ends up to the end. Place both nuts on the pipe ends.



Put the grip rings on the pipe ends up to the end (audible click).



Put the body between the pipe ends, pull out the coupling until the sealing of the grip rings are fully covered in the sealing chamber of the body.



Fasten left and right nuts on the body until the grip ring hang max. 1–2 mm out of the nut. Avoid here that the pipe rotates.



Finally screw the middle nut marked with a groove with the body solidly.

## REPAIRCASE VARIANT 16 & 20 MM

for multi-layer pipes from various manufacturers for sizes: 16 mm and 20 mm. Multilayer pipes according to DIN 16836 and DIN EN ISO 21003 (type M).



Code  
14.320.35.1620

## THE multigeboX

### REPAIR CASE VARIANT 25/26 MM

contains 1 x set multigebo 25/26 mm x 25/26 mm with adjustable length and 2 x set multigebo 25/26 mm x 1" with male thread.



Variant  
25/26 mm

Code  
14.320.35.2526

## ADVANTAGES

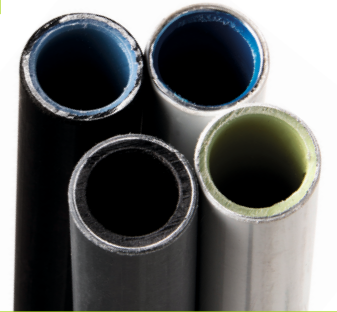
- | The perfect repair solution for multi-layer pipes from various manufacturers
- | Highest flexibility thanks to the modular system (one body for each outer diameter, different support bodies for different inner diameters)
- | Tested and approved for long-term use by means of a temperature change test (test was carried out by an accredited test laboratory)
- | No maintenance necessary
- | Suitable for use in cold and hot water
- | Complies with the latest hygienic requirements for drinking water applications (metal evaluation-UBA basis for drinking water)
- | EPDM seal with DVGW certification for drinking water
- | Up to 10 bar with cold water and 6 bar with hot water
- | Temperature resistance up to max 95 °C and 70 °C at 6 bar
- | Mountable with standard tools

## FOR FURTHER QUESTIONS PLEASE CONTACT US

**GEBO Armaturen GmbH**  
Am Damm 4 · D-58332 Schwelm  
Fon +49(0)2336-9285-0

info@gebo.de · www.gebo.de

M-1001-11.2020



Different  
Multilayer Pipes

## ... ONE SOLUTION!



NOW ALSO  
IN 25/26  
AND 32 mm  
AVAILABLE!!

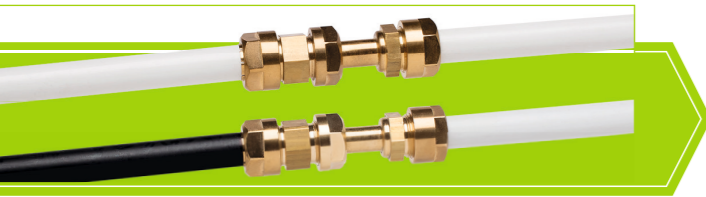


The perfect repair solution for multi-layer composite pipes according to DIN 16836 and DIN EN ISO 21003 (type M) from various manufacturers

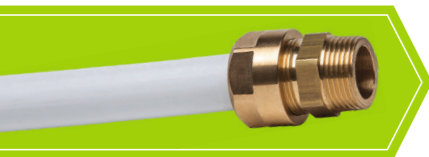
Highest degree of flexibility thanks to the modular construction system (one body for each outer diameter, different support bodies for different inner diameters)

## OUR INNOVATION

Compression fittings with adjustable length for repairing existing pipe systems or for connecting two different multi-layer composite pipes



Compression fittings with male thread to DIN 10226-1 (ISO 7/1) for reductions/transitions/expansions of multi-layer composite pipes



16 mm & 20 mm  
also suitable  
for PE-Xc Pipe\*  
and  
PE-X Pipe\*\*

## MULTIGEBO IS SUITABLE FOR

- Repairs of drinking water pipes (cold + hot)
- Repairs of water-bearing heating pipes
- Installation in walls and floors – observe installation guidelines!  
Apply corrosion protection and ensure expansion compensation!
- Operating pressure 10 bar (20°C) / 6 bar (70°C)
- max. temperature up to 95°C

The brass material and seals meet the latest hygienic requirements for drinking water.

\* to DIN EN ISO 21003 Type P

\*\*to DIN EN ISO 15875

## COMPRESSION FITTINGS WITH ADJUSTABLE LENGTH

### 16 x 16 mm

Code 14.320.02.16KIT

#### QTY Content

1	Multigebo 16 x 16 mm with adjustable length
2	Support sleeve 11.5 – 11.6 mm
2	Support sleeve 12.0 mm
1	Gauge for inner diameter of pipe



### 20 x 20 mm

Code 14.320.02.20KIT

#### QTY Content

1	Multigebo 20 x 20 mm with adjustable length
2	Support sleeve 14.4 mm
2	Support sleeve 15.0 mm
2	Support sleeve 15.5 mm
2	Support sleeve 16.0 mm
1	Gauge for inner diameter of pipe



### 25/26 x 25/26 mm

Code 14.320.02.2526KIT

#### QTY Content

1	Multigebo 25/26 x 25/26 mm with adjustable length
2	Support sleeve 19.6 mm
2	Support sleeve 20.0 mm
2	Grip ring 25 mm
2	Grip ring 26 mm
1	Gauge for inner diameter of pipe



### 32 x 32 mm

Code 14.320.02.32KIT

#### QTY Content

1	Multigebo 32 x 32 mm with adjustable length
2	Support sleeve 25.6 mm
2	Support sleeve 26.0 mm
2	Grip ring 32 mm
1	Gauge for inner diameter of pipe

## COMPRESSION FITTINGS WITH MALE THREAD (ISO 7/1)

### 16 mm x 1/2"

Code 14.320.00.16KIT

#### QTY Content

1	Multigebo 16 mm x 1/2" with male thread
1	Support sleeve 11.5 – 11.6 mm
1	Support sleeve 12.0 mm
1	Gauge for inner diameter of pipe



### 20 mm x 3/4"

Code 14.320.00.20KIT

#### QTY Content

1	Multigebo 20 mm x 3/4" mit Außengewinde
1	Support sleeve 14.4 mm
1	Support sleeve 15.0 mm
1	Support sleeve 15.5 mm
1	Support sleeve 16.0 mm
1	Gauge for inner diameter of pipe

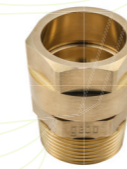


### 25/26 mm x 1"

Code 14.320.00.2526KIT

#### QTY Content

1	Multigebo 25/26 mm x 1" with male thread
1	Support sleeve 19.6 mm
1	Support sleeve 20.0 mm
1	Grip ring 25 mm
1	Grip ring 26 mm
1	Gauge for inner diameter of pipe



### 32 mm x 1 1/4"

Code 14.320.00.32KIT

#### QTY Content

1	Multigebo 32 mm x 1 1/4" with male thread
1	Support sleeve 25.6 mm
1	Support sleeve 26.0 mm
1	Grip ring 32 mm
1	Gauge for inner diameter of pipe



Version 02

Articles included in the set:



Version 00

Articles included in the set:

