



gebofittings

REGULAR LINE

PRODUCT STANDARDS AND APPLICATIONS:

GEBO Threaded Malleable Cast Iron Fittings are in compliance with Standard DIN EN 10242, design symbol A, corresponding to the materials and thread combination.

GEBO Threaded Malleable Cast Iron Fittings are in accordance with the requirements of above Standard, suitable for compressed air, water, flammable gases, hydrocarbons and other media under the mentioned pressure and temperature limits.

Application:

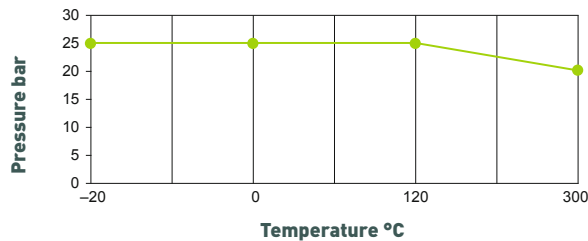
Working minimal temperature: -20 °C, 25 bar

Working pressure for temperature range from -20 °C to 120 °C: 25 bar

Working pressure for temperature range from 120 °C to 300 °C: 20-25 bar

TECHNICAL DATA:

Pressure to temperature ratio



MATERIAL COMPOSITION:

Gebo Threaded Fittings are made in Malleable Cast Iron and with design symbol A in compliance with standard DIN EN 10242:1994, quality grade known as EN-GJMB-350-10.

This means that the following results are obtained in mechanical tests on samples with a diameter of 12 mm:

- Tensile strength (minimum value): 350 N/mm² [35 kg/mm²]
- Yield strength 0.2% (minimum value): 200 N/mm² [20 kg/mm²]
- Elongation (minimum value): 10%
- Brinell hardness: max. 150 HB

In order to ensure that there are no defects in material that could result in leakage, each GEBO Fitting is leak tightness tested in accordance with requirements of DIN EN 10242.

REGULAR LINE

ZINC COATING:

GEBO threaded fittings are hot-dip galvanized by zinc plating, under Standard DIN EN 10242.

The zinc coating is over 500 gr/m², that means minimal average thickness of 70 micron.

This thickness of the zinc coating and the good adherence to the base surface assure a perfect and long-lasting anti-corrosive protection.

CLEANING AND LUBRIFICATION:

All Gebo Fittings are cleaned off from all mechanical production residues and provided with a corrosion protection.

THREAD CONNECTION:

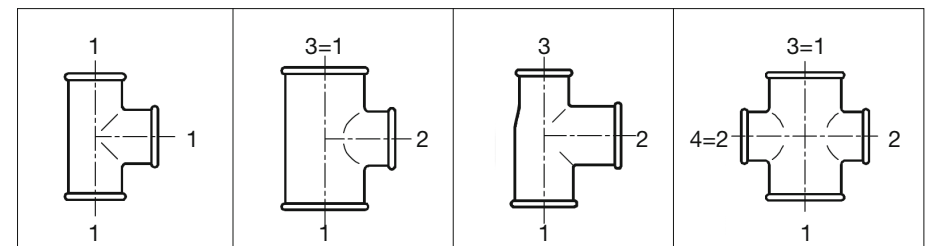
Jointing threads: GEBO threaded fittings with design symbol A are produced with taper external thread (R) and parallel internal thread (Rp) in accordance with Standard ISO 7/1 (DIN EN 10226-1).

Fastening threads: GEBO threaded fittings with design symbol A are produced with parallel external and internal threads (G) in accordance with Standard DIN EN ISO 228/1.

DN	6	8	10	15	20	25	32	40	50	65	80	100
INCH	1/8	1/4	3/8	1/2	3/4	1	1 1/4	1 1/2	2	2 1/2	3	4

THREAD ALIGNMENT:

The mechanization process of GEBO fittings prevents the alignment of threads from any variations over 0.5° (30'), as indicated in the Standard.



REGULAR LINE



1 LONG SWEEP BEND 90° M/F		ISO G4	
Sizes	Code galvanized	Code black	
1/4"	1-2G	1-2S	
3/8"	1-3G	1-3S	
1/2"	1-4G	1-4S	
3/4"	1-5G	1-5S	
1"	1-6G	1-6S	
1 1/4"	1-7G	1-7S	
1 1/2"	1-8G	1-8S	
2"	1-9G	1-9S	
2 1/2"	1-10G	1-10S	
3"	1-11G	1-11S	
4"	1-12G	1-12S	



1A SHORT BEND 90° M/F		ISO D4	
Sizes	Code galvanized	Code black	
3/8"	1A-3G	1A-3S	
1/2"	1A-4G	1A-4S	
3/4"	1A-5G	1A-5S	
1"	1A-6G	1A-6S	
1 1/4"	1A-7G	1A-7S	
1 1/2"	1A-8G	1A-8S	
2"	1A-9G	1A-9S	
2 1/2"	1A-10G	1A-10S	



2 LONG SWEEP BEND 90° F/F		ISO G1	
Sizes	Code galvanized	Code black	
1/4"	2-2G	2-2S	
3/8"	2-3G	2-3S	
1/2"	2-4G	2-4S	
3/4"	2-5G	2-5S	
1"	2-6G	2-6S	
1 1/4"	2-7G	2-7S	
1 1/2"	2-8G	2-8S	
2"	2-9G	2-9S	
2 1/2"	2-10G	2-10S	
3"	2-11G	2-11S	
4"	2-12G	2-12S	



2A SHORT BEND 90° F/F		ISO D1	
Sizes	Code galvanized	Code black	
1/2"	2A-4G	2A-4S	
3/4"	2A-5G	2A-5S	
1"	2A-6G	2A-6S	
1 1/4"	2A-7G	2A-7S	
1 1/2"	2A-8G	2A-8S	
2"	2A-9G	2A-9S	

REGULAR LINE



3 LONG SWEEP BEND 90° M/M		ISO G8	
Sizes	Code galvanized	Code black	
1/4"	3-2G	3-2S	
3/8"	3-3G	3-3S	
1/2"	3-4G	3-4S	
3/4"	3-5G	3-5S	
1"	3-6G	3-6S	
1 1/4"	3-7G	3-7S	
1 1/2"	3-8G	3-8S	
2"	3-9G	3-9S	
2 1/2"	3-10G	3-10S	
3"	3-11G	3-11S	
4"	3-12G	3-12S	

40 LONG SWEEP BEND 45° M/F		ISO G4/45°	
Sizes	Code galvanized	Code black	
1/4"	40-2G	40-2S	
3/8"	40-3G	40-3S	
1/2"	40-4G	40-4S	
3/4"	40-5G	40-5S	
1"	40-6G	40-6S	
1 1/4"	40-7G	40-7S	
1 1/2"	40-8G	40-8S	
2"	40-9G	40-9S	
2 1/2"	40-10G	40-10S	
3"	40-11G	40-11S	
4"	40-12G	40-12S	
6"	40-14G		



41 LONG SWEEP BEND 45° F/F		ISO G1/45°	
Sizes	Code galvanized	Code black	
3/8"	41-3G	41-3S	
1/2"	41-4G	41-4S	
3/4"	41-5G	41-5S	
1"	41-6G	41-6S	
1 1/4"	41-7G	41-7S	
1 1/2"	41-8G	41-8S	
2"	41-9G	41-9S	
2 1/2"	41-10G	41-10S	
3"	41-11G	41-11S	
4"	41-12G	41-12S	



60 RETURN BEND F/F			
Sizes	Code galvanized	Code black	
3/4"	60-5G	60-5S	
1"	60-6G	60-6S	
1 1/2"	60-8G	60-8S	
2"	60-9G	60-9S	



REGULAR LINE



85 CROSSOVER F/F		
Sizes	Code galvanized	Code black
1/2"	85-4G	85-4S
3/4"	85-5G	85-5S
1"	85-6G	85-6S
1 1/4"	85-7G	85-7S
1 1/2"	85-8G	85-8S
2"	85-9G	85-9S



90 ELBOW 90° F/F, EQUAL ISO A1		
Sizes	Code galvanized	Code black
1/4"	90-2G	90-2S
3/8"	90-3G	90-3S
1/2"	90-4G	90-4S
3/4"	90-5G	90-5S
1"	90-6G	90-6S
1 1/4"	90-7G	90-7S
1 1/2"	90-8G	90-8S
2"	90-9G	90-9S
2 1/2"	90-10G	90-10S
3"	90-11G	90-11S
4"	90-12G	90-12S
5"	90-13G	90-13S
6"	90-14G	90-14S



90 ELBOW 90° F/F, REDUCING ISO A1		
Sizes [1x2]	Code galvanized	Code black
3/8" x 1/4"	90-16G	90-16S
1/2" x 1/4"	90-18G	90-18S
1/2" x 3/8"	90-19G	90-19S
3/4" x 3/8"	90-21G	90-21S
3/4" x 1/2"	90-22G	90-22S
1" x 1/2"	90-25G	90-25S
1" x 3/4"	90-26G	90-26S
1 1/4" x 1/2"	90-27G	90-27S
1 1/4" x 3/4"	90-28G	90-28S
1 1/4" x 1"	90-29G	90-29S
1 1/2" x 1/2"	90-30G	90-30S
1 1/2" x 3/4"	90-31G	90-31S
1 1/2" x 1"	90-32G	90-32S
1 1/2" x 1 1/4"	90-33G	90-33S
2" x 1/2"	90-34G	90-34S
2" x 3/4"	90-35G	90-35S
2" x 1"	90-36G	90-36S
2" x 1 1/4"	90-37G	90-37S
2" x 1 1/2"	90-38G	90-38S
2 1/2" x 1"	90-41G	90-41S
2 1/2" x 1 1/2"	90-43G	90-43S
2 1/2" x 2"	90-44G	90-44S
3" x 1 1/2"	90-49G	90-49S
3" x 2"	90-50G	90-50S
3" x 2 1/2"	90-51G	90-51S
4" x 2 1/2"	90-52G	90-52S
4" x 3"	90-53G	90-53S

REGULAR LINE



92 ELBOW 90° M/F, EQUAL AND REDUCING ISO A4		
Sizes [1x2]	Code galvanized	Code black
1/4"	92-2G	92-2S
3/8"	92-3G	92-3S
1/2"	92-4G	92-4S
3/4"	92-5G	92-5S
1"	92-6G	92-6S
1 1/4"	92-7G	92-7S
1 1/2"	92-8G	92-8S
2"	92-9G	92-9S
2 1/2"	92-10G	92-10S
3"	92-11G	92-11S
4"	92-12G	92-12S
1/2" x 3/8"	92-19G	92-19S
3/4" x 3/8"	92-21G	92-21S
3/4" x 1/2"	92-22G	92-22S
1" x 3/4"	92-26G	92-26S
1 1/4" x 1"	92-29G	92-29S
1 1/2" x 1"	92-32G	92-32S
1 1/2" x 1 1/4"	92-33G	92-33S

94 ELBOW 90° M/M		
Sizes	Code galvanized	Code black
3/8"	94-3G	94-3S
1/2"	94-4G	94-4S
3/4"	94-5G	94-5S
1"	94-6G	94-6S
1 1/4"	94-7G	94-7S
1 1/2"	94-8G	94-8S
2"	94-9G	94-9S

95 UNION ELBOW 90°, FLAT SEAT, F/F ISO UA1		
Sizes	Code galvanized	Code black
3/8"	95-3G	95-3S
1/2"	95-4G	95-4S
3/4"	95-5G	95-5S
1"	95-6G	95-6S
1 1/4"	95-7G	95-7S
1 1/2"	95-8G	95-8S
2"	95-9G	95-9S

96 UNION ELBOW 90°, TAPER SEAT, F/F ISO UA11		
Sizes	Code galvanized	Code black
3/8"	96-3G	96-3S
1/2"	96-4G	96-4S
3/4"	96-5G	96-5S
1"	96-6G	96-6S
1 1/4"	96-7G	96-7S
1 1/2"	96-8G	96-8S
2"	96-9G	96-9S
2 1/2"	96-10G	96-10S
3"	96-11G	96-11S



REGULAR LINE



97 UNION ELBOW 90°, FLAT SEAT, M/F		ISO UA2
Sizes	Code galvanized	Code black
3/8"	97-3G	97-3S
1/2"	97-4G	97-4S
3/4"	97-5G	97-5S
1"	97-6G	97-6S
1 1/4"	97-7G	97-7S
1 1/2"	97-8G	97-8S
2"	97-9G	97-9S



98 UNION ELBOW 90°, TAPER SEAT, M/F		ISO UA12
Sizes	Code galvanized	Code black
3/8"	98-3G	98-3S
1/2"	98-4G	98-4S
3/4"	98-5G	98-5S
1"	98-6G	98-6S
1 1/4"	98-7G	98-7S
1 1/2"	98-8G	98-8S
2"	98-9G	98-9S
2 1/2"	98-10G	98-10S
3"	98-11G	98-11S



120 ELBOW 45° F/F		ISO A1/45°
Sizes	Code galvanized	Code black
1/4"	120-2G	120-2S
3/8"	120-3G	120-3S
1/2"	120-4G	120-4S
3/4"	120-5G	120-5S
1"	120-6G	120-6S
1 1/4"	120-7G	120-7S
1 1/2"	120-8G	120-8S
2"	120-9G	120-9S
2 1/2"	120-10G	120-10S
3"	120-11G	120-11S
4"	120-12G	120-12S



121 ELBOW 45° M/F		ISO A4/45°
Sizes	Code galvanized	Code black
3/8"	121-3G	121-3S
1/2"	121-4G	121-4S
3/4"	121-5G	121-5S
1"	121-6G	121-6S
1 1/4"	121-7G	121-7S
1 1/2"	121-8G	121-8S
2"	121-9G	121-9S
2 1/2"	121-10G	121-10S
3"	121-11G	121-11S

REGULAR LINE



130 TEE 90°, F/F/F, EQUAL		ISO B1
Sizes	Code galvanized	Code black
1/4"	130-2G	130-2S
3/8"	130-3G	130-3S
1/2"	130-4G	130-4S
3/4"	130-5G	130-5S
1"	130-6G	130-6S
1 1/4"	130-7G	130-7S
1 1/2"	130-8G	130-8S
2"	130-9G	130-9S
2 1/2"	130-10G	130-10S
3"	130-11G	130-11S
4"	130-12G	130-12S
5"	130-13G	130-13S
6"	130-14G	130-14S

130 TEE 90° F/F/F, REDUCING		ISO B1
Sizes [1x2x3]	Code galvanized	Code black
3/8" x 1/4" x 3/8"	130-15G	130-15S
3/8" x 1/2" x 3/8"	130-115G	130-115S
1/2" x 1/4" x 1/2"	130-17G	130-17S
1/2" x 3/8" x 3/8"	130-71G	130-71S
1/2" x 3/8" x 1/2"	130-19G	130-19S
1/2" x 1/2" x 3/8"	130-72G	130-72S
1/2" x 3/4" x 1/2"	130-20G	130-20S
1/2" x 1" x 1/2"	130-16G	130-16S
3/4" x 1/4" x 3/4"	130-116G	130-116S
3/4" x 3/8" x 3/4"	130-21G	130-21S
3/4" x 1/2" x 1/2"	130-61G	130-61S
3/4" x 1/2" x 3/4"	130-22G	130-22S
3/4" x 3/4" x 3/8"	130-64G	130-64S
3/4" x 3/4" x 1/2"	130-62G	130-62S
3/4" x 1" x 1/2"	130-66G	130-66S
3/4" x 1" x 3/4"	130-70G	130-70S
1" x 3/8" x 1"	130-18G	130-18S
1" x 1/2" x 1/2"	130-67G	130-67S
1" x 1/2" x 3/4"	130-68G	130-68S
1" x 1/2" x 1"	130-25G	130-25S
1" x 3/4" x 1/2"	130-69G	130-69S
1" x 3/4" x 3/4"	130-73G	130-73S
1" x 3/4" x 1"	130-26G	130-26S
1" x 1" x 3/8"	130-74G	130-74S
1" x 1" x 1/2"	130-75G	130-75S
1" x 1" x 3/4"	130-65G	130-65S
1" x 1 1/4" x 1"	130-23G	130-23S
1" x 1 1/2" x 1"	130-117G	130-117S
1 1/4" x 3/8" x 1 1/4"	130-24G	130-24S
1 1/4" x 1/2" x 1"	130-77G	130-77S
1 1/4" x 1/2" x 1 1/4"	130-27G	130-27S
1 1/4" x 3/4" x 3/4"	130-78G	130-78S
1 1/4" x 3/4" x 1"	130-79G	130-79S
1 1/4" x 3/4" x 1 1/4"	130-28G	130-28S
1 1/4" x 1" x 3/4"	130-80G	130-80S
1 1/4" x 1" x 1"	130-81G	130-81S
1 1/4" x 1" x 1 1/4"	130-29G	130-29S
1 1/4" x 1 1/4" x 1/2"	130-82G	130-82S
1 1/4" x 1 1/4" x 3/4"	130-83G	130-83S
1 1/4" x 1 1/4" x 1"	130-84G	130-84S
1 1/4" x 1 1/2" x 1 1/4"	130-40G	130-40S
1 1/4" x 2" x 1 1/4"	130-41G	130-41S
1 1/2" x 1/2" x 1 1/4"	130-86G	130-86S
1 1/2" x 1/2" x 1 1/2"	130-30G	130-30S
1 1/2" x 3/4" x 1 1/4"	130-87G	130-87S
1 1/2" x 3/4" x 1 1/2"	130-31G	130-31S



REGULAR LINE



130 TEE 90° F/F/F, REDUCING ISO B1		
Sizes [1x2x3]	Code galvanized	Code black
1 1/2" x 1" x 1"	130-88G	130-88S
1 1/2" x 1" x 1 1/4"	130-89G	130-89S
1 1/2" x 1" x 1 1/2"	130-32G	130-32S
1 1/2" x 1 1/4" x 1"	130-90G	130-90S
1 1/2" x 1 1/4" x 1 1/4"	130-91G	130-91S
1 1/2" x 1 1/4" x 1 1/2"	130-33G	130-33S
1 1/2" x 1 1/2" x 1 1/2"	130-92G	130-92S
1 1/2" x 1 1/2" x 3/4"	130-93G	130-93S
1 1/2" x 1 1/2" x 1"	130-94G	130-94S
1 1/2" x 1 1/2" x 1 1/4"	130-95G	130-95S
1 1/2" x 2" x 1 1/4"	130-96G	130-96S
1 1/2" x 2" x 1 1/2"	130-39G	130-39S
2" x 1/2" x 1 1/2"	130-97G	130-97S
2" x 1/2" x 2"	130-34G	130-34S
2" x 3/4" x 1 1/2"	130-98G	130-98S
2" x 3/4" x 2"	130-35G	130-35S
2" x 1" x 1 1/2"	130-99G	130-99S
2" x 1" x 2"	130-36G	130-36S
2" x 1 1/4" x 1 1/4"	130-100G	130-100S
2" x 1 1/4" x 1 1/2"	130-101G	130-101S
2" x 1 1/4" x 2"	130-37G	130-37S
2" x 1 1/2" x 1 1/2"	130-102G	130-102S
2" x 1 1/2" x 2"	130-38G	130-38S
2" x 2" x 1/2"	130-103G	130-103S
2" x 2" x 3/4"	130-104G	130-104S
2" x 2" x 1"	130-105G	130-105S
2" x 2" x 1 1/2"	130-107G	130-107S
2 1/2" x 1/2" x 2 1/2"	130-44G	130-44S
2 1/2" x 3/4" x 2 1/2"	130-45G	130-45S
2 1/2" x 1" x 2 1/2"	130-42G	130-42S
2 1/2" x 1 1/4" x 2 1/2"	130-46G	130-46S
2 1/2" x 1 1/2" x 2 1/2"	130-47G	130-47S
2 1/2" x 2" x 2"	130-108G	130-108S
2 1/2" x 2" x 2 1/2"	130-48G	130-48S
3" x 1" x 3"	130-51G	130-51S
3" x 1 1/4" x 3"	130-52G	130-52S
3" x 1 1/2" x 3"	130-53G	130-53S
3" x 2" x 3"	130-50G	130-50S
3" x 2 1/2" x 3"	130-54G	130-54S
4" x 1 1/4" x 4"	130-118G	130-118S
4" x 1 1/2" x 4"	130-119G	130-119S
4" x 2" x 4"	130-57G	130-57S
4" x 2 1/2" x 4"	130-58G	130-58S
4" x 3" x 4"	130-59G	130-59S



131 PITCHER TEE, EQUAL, F/F/F ISO E1		
Sizes	Code galvanized	Code black
1/2"	131-4G	131-4S
3/4"	131-5G	131-5S
1"	131-6G	131-6S
1 1/4"	131-7G	131-7S
1 1/2"	131-8G	131-8S
2"	131-9G	131-9S



132 TWIN ELBOW, EQUAL, F/F/F ISO E2		
Sizes	Code galvanized	Code black
1/2"	132-4G	132-4S
3/4"	132-5G	132-5S
1"	132-6G	132-6S
1 1/4"	132-7G	132-7S
1 1/2"	132-8G	132-8S
2"	132-9G	132-9S

REGULAR LINE

133 TEE EQUAL F/M/F		
Sizes	Code galvanized	Code black
3/8"	133-3G	133-3S
1/2"	133-4G	133-4S
3/4"	133-5G	133-5S
1"	133-6G	133-6S



134 TEE EQUAL M/F/F		
Sizes	Code galvanized	Code black
1/2"	134-4G	134-4S
3/4"	134-5G	134-5S
1"	134-6G	134-6S
1 1/4"	134-7G	134-7S
1 1/2"	134-8G	134-8S
2"	134-9G	134-9S



135 TEE EQUAL M/M/M		
Sizes	Code galvanized	Code black
1/2"	135-4G	135-4S
3/4"	135-5G	135-5S
1"	135-6G	135-6S



165 TEE LATERAL Y BRANCH 45° F/F/F		
Sizes	Code galvanized	Code black
1/2"	165-4G	165-4S
3/4"	165-5G	165-5S
1"	165-6G	165-6S
1 1/4"	165-7G	165-7S
1 1/2"	165-8G	165-8S
2"	165-9G	165-9S



180 CROSS EQUAL F/F/F/F ISO C1		
Sizes	Code galvanized	Code black
1/4"	180-2G	180-2S
3/8"	180-3G	180-3S
1/2"	180-4G	180-4S
3/4"	180-5G	180-5S
1"	180-6G	180-6S
1 1/4"	180-7G	180-7S
1 1/2"	180-8G	180-8S
2"	180-9G	180-9S
2 1/2"	180-10G	180-10S
3"	180-11G	180-11S
4"	180-12G	180-12S



180 CROSS REDUCING F/F/F/F ISO C1		
Sizes [1x2]	Code galvanized	Code black
3/4" x 1/2"	180-22G	180-22S
1" x 1/2"	180-25G	180-25S



REGULAR LINE



220 Y-PIECE F/F/F		
Sizes	Code galvanized	Code black
3/8"	220-3G	220-3S
1/2"	220-4G	220-4S
3/4"	220-5G	220-5S
1"	220-6G	220-6S



221 SIDE OUTLET ELBOW F/F/F ISO Za1		
Sizes	Code galvanized	Code black
1/2"	221-4G	221-4S
3/4"	221-5G	221-5S
1"	221-6G	221-6S
1 1/4"	221-7G	221-7S
1 1/2"	221-8G	221-8S
2"	221-9G	221-9S



223 SIDE OUTLET TEE F/F/F/F ISO Za2		
Sizes	Code galvanized	Code black
1/2"	223-4G	223-4S
3/4"	223-5G	223-5S
1"	223-6G	223-6S
1 1/4"	223-7G	223-7S



240 REDUCING SOCKET F/F ISO M2		
Sizes [1x2]	Code galvanized	Code black
3/8" x 1/4"	240-16G	240-16S
1/2" x 1/4"	240-18G	240-18S
1/2" x 3/8"	240-19G	240-19S
3/4" x 3/8"	240-21G	240-21S
3/4" x 1/2"	240-22G	240-22S
1" x 3/8"	240-24G	240-24S
1" x 1/2"	240-25G	240-25S
1" x 3/4"	240-26G	240-26S
1 1/4" x 1/2"	240-27G	240-27S
1 1/4" x 3/4"	240-28G	240-28S
1 1/4" x 1"	240-29G	240-29S
1 1/2" x 1/2"	240-30G	240-30S
1 1/2" x 3/4"	240-31G	240-31S
1 1/2" x 1"	240-32G	240-32S
1 1/2" x 1 1/4"	240-33G	240-33S
2" x 1/2"	240-34G	240-34S
2" x 3/4"	240-35G	240-35S
2" x 1"	240-36G	240-36S
2" x 1 1/4"	240-37G	240-37S
2" x 1 1/2"	240-38G	240-38S
2 1/2" x 1/2"	240-39G	240-39S
2 1/2" x 3/4"	240-40G	240-40S
2 1/2" x 1"	240-41G	240-41S
2 1/2" x 1 1/4"	240-42G	240-42S
2 1/2" x 1 1/2"	240-43G	240-43S
2 1/2" x 2"	240-44G	240-44S
3" x 1"	240-47G	240-47S
3" x 1 1/4"	240-48G	240-48S
3" x 1 1/2"	240-49G	240-49S
3" x 2"	240-50G	240-50S
3" x 2 1/2"	240-51G	240-51S
4" x 1 1/2"	240-56G	240-56S
4" x 2"	240-57G	240-57S
4" x 2 1/2"	240-58G	240-58S
4" x 3"	240-59G	240-59S

REGULAR LINE



241 REDUCING BUSH, M/F ISO N4		
Sizes [1x2]	Code galvanized	Code black
3/8" x 1/4"	241-16G	241-16S
1/2" x 1/4"	241-18G	241-18S
1/2" x 3/8"	241-19G	241-19S
3/4" x 1/4"	241-20G	241-20S
3/4" x 3/8"	241-21G	241-21S
3/4" x 1/2"	241-22G	241-22S
1" x 3/8"	241-24G	241-24S
1" x 1/2"	241-25G	241-25S
1" x 3/4"	241-26G	241-26S
1 1/4" x 1/2"	241-27G	241-27S
1 1/4" x 3/4"	241-28G	241-28S
1 1/4" x 1"	241-29G	241-29S
1 1/2" x 1/2"	241-30G	241-30S
1 1/2" x 3/4"	241-31G	241-31S
1 1/2" x 1"	241-32G	241-32S
1 1/2" x 1 1/4"	241-33G	241-33S
2" x 1/2"	241-34G	241-34S
2" x 3/4"	241-35G	241-35S
2" x 1"	241-36G	241-36S
2" x 1 1/4"	241-37G	241-37S
2" x 1 1/2"	241-38G	241-38S
2 1/2" x 1/2"	241-39G	241-39S
2 1/2" x 3/4"	241-40G	241-40S
2 1/2" x 1"	241-41G	241-41S
2 1/2" x 1 1/4"	241-42G	241-42S
2 1/2" x 1 1/2"	241-43G	241-43S
2 1/2" x 2"	241-44G	241-44S
3" x 3/4"	241-46G	241-46S
3" x 1"	241-47G	241-47S
3" x 1 1/4"	241-48G	241-48S
3" x 1 1/2"	241-49G	241-49S
3" x 2"	241-50G	241-50S
3" x 2 1/2"	241-51G	241-51S
4" x 1"	241-54G	241-54S
4" x 1 1/4"	241-55G	241-55S
4" x 1 1/2"	241-56G	241-56S
4" x 2"	241-57G	241-57S
4" x 2 1/2"	241-58G	241-58S
4" x 3"	241-59G	241-59S
5" x 4"	241-60G	241-60S
6" x 3"	241-61G	241-61S
6" x 4"	241-62G	241-62S
6" x 5"	241-63G	241-63S

245 HEXAGON NIPPLE REDUCING, M/M ISO N8		
Sizes [1x2]	Code galvanized	Code black
3/8" x 1/4"	245-16G	245-16S
1/2" x 1/4"	245-18G	245-18S
1/2" x 3/8"	245-19G	245-19S
3/4" x 3/8"	245-21G	245-21S
3/4" x 1/2"	245-22G	245-22S
1" x 1/2"	245-25G	245-25S
1" x 3/4"	245-26G	245-26S
1 1/4" x 1/2"	245-27G	245-27S
1 1/4" x 3/4"	245-28G	245-28S
1 1/4" x 1"	245-29G	245-29S
1 1/2" x 1/2"	245-30G	245-30S
1 1/2" x 3/4"	245-31G	245-31S
1 1/2" x 1"	245-32G	245-32S
1 1/2" x 1 1/4"	245-33G	245-33S
2" x 1/2"	245-34G	245-34S
2" x 3/4"	245-35G	245-35S



REGULAR LINE



1

2



1



245 HEXAGON NIPPLE REDUCING, M/M ISO N8

Sizes [1x2]	Code galvanized	Code black
2" x 1"	245-36G	245-36S
2" x 1 1/4"	245-37G	245-37S
2" x 1 1/2"	245-38G	245-38S
2 1/2" x 1"	245-41G	245-41S
2 1/2" x 1 1/4"	245-42G	245-42S
2 1/2" x 1 1/2"	245-43G	245-43S
2 1/2" x 2"	245-44G	245-44S
3" x 1 1/2"	245-49G	245-49S
3" x 2"	245-50G	245-50S
3" x 2 1/2"	245-51G	245-51S
4" x 2"	245-57G	245-57S
4" x 2 1/2"	245-58G	245-58S
4" x 3"	245-59G	245-59S

246 REDUCING SOCKETS F/M ISO M4

Sizes [1x2]	Code galvanized	Code black
3/8" x 1/4"	246-16G	246-16S
1/2" x 1/4"	246-18G	246-18S
1/2" x 3/8"	246-19G	246-19S
3/4" x 3/8"	246-21G	246-21S
3/4" x 1/2"	246-22G	246-22S
1" x 1/2"	246-25G	246-25S
1" x 3/4"	246-26G	246-26S
1 1/4" x 1/2"	246-27G	246-27S
1 1/4" x 3/4"	246-28G	246-28S
1 1/4" x 1"	246-29G	246-29S
1 1/2" x 3/4"	246-31G	246-31S
1 1/2" x 1"	246-32G	246-32S
1 1/2" x 1 1/4"	246-33G	246-33S
2" x 1/2"	246-34G	246-34S
2" x 3/4"	246-35G	246-35S
2" x 1"	246-36G	246-36S
2" x 1 1/4"	246-37G	246-37S
2" x 1 1/2"	246-38G	246-38S
2 1/2" x 2"	246-44G	246-44S
3" x 2"	246-50G	246-50S
3" x 2 1/2"	246-51G	246-51S

270 SOCKETS EQUAL, F/F ISO M2

Sizes	Code galvanized	Code black
1/4"	270-2G	270-2S
3/8"	270-3G	270-3S
1/2"	270-4G	270-4S
3/4"	270-5G	270-5S
1"	270-6G	270-6S
1 1/4"	270-7G	270-7S
1 1/2"	270-8G	270-8S
2"	270-9G	270-9S
2 1/2"	270-10G	270-10S
3"	270-11G	270-11S
4"	270-12G	270-12S

271 SOCKETS, F/F, RIGHT AND LEFT HAND THREAD ISO M2 R-L

Sizes	Code galvanized	Code black
1/2"	271-4G	271-4S
3/4"	271-5G	271-5S
1"	271-6G	271-6S
1 1/4"	271-7G	271-7S
1 1/2"	271-8G	271-8S
2"	271-9G	271-9S

REGULAR LINE



280 HEXAGON NIPPLES, M/M ISO N8

Sizes	Code galvanized	Code black
1/4"	280-2G	280-2S
3/8"	280-3G	280-3S
1/2"	280-4G	280-4S
3/4"	280-5G	280-5S
1"	280-6G	280-6S
1 1/4"	280-7G	280-7S
1 1/2"	280-8G	280-8S
2"	280-9G	280-9S
2 1/2"	280-10G	280-10S
3"	280-11G	280-11S
4"	280-12G	280-12S
5"	280-13G	280-13S
6"	280-14G	280-14S

281 HEXAGON NIPPLES M/M, RIGHT AND LEFT HAND THREAD ISO N8 R-L

Sizes	Code galvanized	Code black
3/8"	281-3G	281-3S
1/2"	281-4G	281-4S
3/4"	281-5G	281-5S
1"	281-6G	281-6S
1 1/4"	281-7G	281-7S
1 1/2"	281-8G	281-8S
2"	281-9G	281-9S

290 PLUGS, BEADED ISO T9

Sizes	Code galvanized	Code black
1/4"	290-2G	290-2S
3/8"	290-3G	290-3S
1/2"	290-4G	290-4S
3/4"	290-5G	290-5S
1"	290-6G	290-6S
1 1/4"	290-7G	290-7S
1 1/2"	290-8G	290-8S
2"	290-9G	290-9S
2 1/2"	290-10G	290-10S
3"	290-11G	290-11S
4"	290-12G	290-12S

291 PLUGS, PLAIN ISO T8

Sizes	Code galvanized	Code black
1/4"	291-2G	291-3S
3/8"	291-3G	291-4S
1/2"	291-4G	291-4S
3/4"	291-5G	291-5S
1"	291-6G	291-6S
1 1/4"	291-7G	291-7S
1 1/2"	291-8G	291-8S
2"	291-9G	291-9S
2 1/2"	291-10G	291-10S
3"	291-11G	291-11S
4"	291-12G	291-12S



REGULAR LINE



300 MULTANGULAR CAP**			ISO T1
Sizes	Code galvanized	Code black	
1/4"	300-2G	300-2S	
3/8"	300-3G	300-3S	
1/2"	300-4G	300-4S	
3/4"	300-5G	300-5S	
1"	300-6G	300-6S	
1 1/4"	300-7G	300-7S	
1 1/2"	300-8G	300-8S	
2"	300-9G	300-9S	
2 1/2"	300-10G	300-10S	
3"	300-11G	300-11S	
4"	300-12G	300-12S	

** Hexagonal cap from size 1/4" to 3/4"; octagonal cap from size 1" do 4"



301 ROUND CAP			ISO T1
Sizes	Code galvanized	Code black	
1/4"	301-2G	301-2S	
3/8"	301-3G	301-3S	
1/2"	301-4G	301-4S	
3/4"	301-5G	301-5S	
1"	301-6G	301-6S	
1 1/4"	301-7G	301-7S	
1 1/2"	301-8G	301-8S	
2"	301-9G	301-9S	
2 1/2"	301-10G	301-10S	
3"	301-11G	301-11S	
4"	301-12G	301-12S	



310 BACKNUTS			ISO P4
Sizes	Code galvanized	Code black	
1/4"	310-2G	310-2S	
3/8"	310-3G	310-3S	
1/2"	310-4G	310-4S	
3/4"	310-5G	310-5S	
1"	310-6G	310-6S	
1 1/4"	310-7G	310-7S	
1 1/2"	310-8G	310-8S	
2"	310-9G	310-9S	
2 1/2"	310-10G	310-10S	
3"	310-11G	310-11S	
4"	310-12G	310-12S	



321 FLANGE, WITHOUT BOLT HOLES			
Sizes	Code galvanized	Code black	
1/2"	321-4G	321-4S	
3/4"	321-5G	321-5S	
1"	321-6G	321-6S	
1 1/4"	321-7G	321-7S	
1 1/2"	321-8G	321-8S	
2"	321-9G	321-9S	

REGULAR LINE



329 FLANGES WITH 4 BOLT HOLES			
Sizes	Code galvanized	Code black	
1/2"	329-4G	329-4S	
3/4"	329-5G	329-5S	
1"	329-6G	329-6S	
1 1/4"	329-7G	329-7S	
1 1/2"	329-8G	329-8S	
2"	329-9G	329-9S	
2 1/2"	329-10G	329-10S	
3"	329-11G	329-11S	

Note: These flanged are not according to standards (no din). Not suitable for use in media-bearing pipelines.

330 UNIONS FLAT SEAT, F/F			ISO U1
Sizes	Code galvanized	Code black	
3/8"	330-3G	330-3S	
1/2"	330-4G	330-4S	
3/4"	330-5G	330-5S	
1"	330-6G	330-6S	
1 1/4"	330-7G	330-7S	
1 1/2"	330-8G	330-8S	
2"	330-9G	330-9S	
2 1/2"	330-10G	330-10S	
3"	330-11G	330-11S	
4"	330-12G	330-12S	



331 UNIONS FLAT SEAT, M/F			ISO U2
Sizes	Code galvanized	Code black	
3/8"	331-3G	331-3S	
1/2"	331-4G	331-4S	
3/4"	331-5G	331-5S	
1"	331-6G	331-6S	
1 1/4"	331-7G	331-7S	
1 1/2"	331-8G	331-8S	
2"	331-9G	331-9S	
2 1/2"	331-10G	331-10S	
3"	331-11G	331-11S	
4"	331-12G	331-12S	



340 UNIONS TAPER SEAT, F/F			ISO U11
Sizes	Code galvanized	Code black	
3/8"	340-3G	340-3S	
1/2"	340-4G	340-4S	
3/4"	340-5G	340-5S	
1"	340-6G	340-6S	
1 1/4"	340-7G	340-7S	
1 1/2"	340-8G	340-8S	
2"	340-9G	340-9S	
2 1/2"	340-10G	340-10S	
3"	340-11G	340-11S	
4"	340-12G	340-12S	



REGULAR LINE



341 UNIONS TAPER SEAT, M/F		ISO U12	
Sizes	Code galvanized	Code black	
3/8"	341-3G	341-3S	
1/2"	341-4G	341-4S	
3/4"	341-5G	341-5S	
1"	341-6G	341-6S	
1 1/4"	341-7G	341-7S	
1 1/2"	341-8G	341-8S	
2"	341-9G	341-9S	
2 1/2"	341-10G	341-10S	
3"	341-11G	341-11S	
4"	341-12G	341-12S	



351 UNION SET (INCLUDING EPDM SEALING)*			
Art. 372	Art. 374	Code galvanized	Code black
1"	G 1 1/2"	351-6S	
1 1/4"	G 1 1/2"	351-7S	

{2 pcs x code 372 + 2 pcs x code 374 + 2 gaskets}
*not applicable for drinking water and gas



370 UNION BUSHES FLAT SEAT			
Sizes		Code galvanized	Code black
Rp	G		
3/4"	1 1/4"	370-5G	370-5S
1"	1 1/2"	370-6G	370-6S
1 1/4"	2"	370-7G	370-7S
1 1/2"	2 1/4"	370-8G	370-8S
2"	2 3/4"	370-9G	370-9S
2 1/2"	3 1/2"	370-10G	370-10S

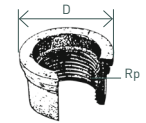
Rp = Parallel internal thread
G = Parallel external and internal threads



371 UNION END FLAT SEAT			
Sizes		Code galvanized	Code black
R	D for G		
3/4"	1 1/4"	371-5G	371-5S
1"	1 1/2"	371-6G	371-6S
1 1/4"	2"	371-7G	371-7S
1 1/2"	2 1/4"	371-8G	371-8S
2"	2 3/4"	371-9G	371-9S
2 1/2"	3 1/2"	371-10G	371-10S

R = Taper external thread

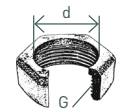
REGULAR LINE



372 UNION END FLAT SEAT			
Sizes		Code galvanized	Code black
Rp	D for G		
3/8"	3/4"	372-3G	372-3S
1/2"	1"	372-4G	372-4S
3/4"	1 1/4"	372-5G	372-5S
1"	1 1/2"	372-6G	372-6S
1 1/4"	2"	372-7G	372-7S
1 1/2"	2 1/4"	372-8G	372-8S
2"	2 3/4"	372-9G	372-9S
2 1/2"	3 1/2"	372-10G	372-10S

Rp = Parallel internal thread

374 UNION NUT			
d to R/Rp	G	Code galvanized	Code black
3/8"	7/8"	374-3G	374-3S
1/2"	1 1/8"	374-4G	374-3S
3/4"	1 1/4"	374-5G	374-3S
1"	1 1/2"	374-6G	374-3S
1 1/4"	2"	374-7G	374-3S
1 1/2"	2 1/4"	374-8G	374-3S
2"	2 3/4"	374-9G	374-3S
2 1/2"	3 1/2"	374-10G	374-3S



471 BRACKET ELBOW			
Sizes		Code galvanized	Code black
1/2"		471-4G	471-4S
3/4"		471-5G	471-5S
1"		471-6G	471-6S



529a SOCKET M/F			ISO M4
Sizes	Code galvanized	Code black	
3/8"	529-3G	529-3S	
1/2"	529-4G	529-4S	
3/4"	529-5G	529-5S	
1"	529-6G	529-6S	
1 1/4"	529-7G	529-7S	
1 1/2"	529-8G	529-8S	
2"	529-9G	529-9S	



531 NIPPLES		
Sizes	Code galvanized	Code black
1/2"	531-4G	531-4S
3/4"	531-5G	531-5S
1"	531-6G	531-6S
1 1/4"	531-7G	531-7S
2"	531-9G	531-9S



HOW MANY TYPES OF MALLEABLE CAST IRON DO EXIST?

Basically there are two groups of malleable cast iron: whiteheart and blackheart. Each of these type is subdivided into further several types indicating the hardness and ductility grade.

WHAT IS THE DIFFERENCE BETWEEN WHITEHEART AND BLACKHEART MALLEABLE CAST IRONS?

Whiteheart malleable cast iron: has a white casting and put through a heat-treatment in decarburising ambience for obtaining a partial or total decarburised material. The possible residual of graphite appears as carbon tempering.

Blackheart malleable cast iron: has a white casting and put through a heat-treatment not decarburising. The residual of graphite appears as carbon tempering concentrated on surface.

WHAT DOES IT MEAN TECHNICALLY?

Here a comparison among few different types of cast iron: by taking two cylinder samples of 12 mm diameter each, a test of Tensile Strength and Bending is carried for measuring the ductile-mechanical features:

- EN-GJMW-400-5 whiteheart malleable cast iron
- EN-GJMB-350-10 blackheart malleable cast iron
- EN-GJMW-350-4 whiteheart malleable cast iron
- EN-GJMW-550-4 whiteheart malleable cast iron
- EN-GJMB-450-6 blackheart malleable cast iron
- EN-GJMB-550-4 blackheart malleable cast iron

Parameter	EN-GJMW-350-4 whiteheart	EN-GJMW-400-5 whiteheart	EN-GJMW-550-4 whiteheart	EN-GJMB-350-10 blackheart	EN-GJMB-450-6 blackheart	EN-GJMB-550-4 blackheart
Tensile strength Rm [N/mm ²]	350	400	550	350	450	550
Elongation A in [%]	4	5	4	10	6	4
Yield strength Rp0.2 [N/mm ²]	160	220	340	200	270	340
Brinell hardness [HB]	Max. 230	Max. 220	Max. 250	Max. 150	150/200	180/230

WHAT STANDARDS ARE APPLICABLE?

The specific Standard for malleable cast iron and its classification is: DIN EN 1562, which describes the classification, types of cast iron and testing parameters.

AND WHAT ARE THE STANDARDS FOR THREADED FITTINGS?

The specific standard is DIN EN 10242, which classifies the different types of fittings by the material, the shape, the threads, the quality test, the tolerance, the thickness of zinc coating, the testing criterions under pressure, etc.

HOW ARE THE GEBO THREADED FITTINGS CLASSIFIED?

Gebo Fittings are classified in „design symbol A“.

WHAT DOES IT MEAN?

The fittings included in this Class must have these features:

- Material type EN-GJMW-400-5 or EN-GJMB-350-10
- Taper external thread (ISO 7/1)
- Parallel internal thread (ISO 7/1)
- Average thickness of zinc coating not under 63 micron
- Must have specific dimensional features
- Must be tested SINGULARLY by immersion in liquid with a testing pressure of 5 bar
- Must be inspected SINGULARLY for eventual defects of shape
- Must pass up to 4“ a resistance test with pressure of min. 100 bar and for 5“ and 6“ min. 64 bar
- Must be produced by a Company Certified ISO 9001
- Other parameters

Fittings accordingly to DIN EN 10242; DVGW certified, Design Symbol “A”

FITTINGS ACCORDINGLY TO DIN EN 10242

