

gebounifix



UNIFIX MINI

pages 170-171

The small, light and quick repair solution for sealing holes, fractures and porous areas in water-bearing pipes. Suitable for steel, black steel, copper and stainless steel piping, as well as for the temporary repair of PE and PVC pipes. Available for 21–93 mm outside pipe diameter and in 60 or 100 mm length.



UNIFIX MIDDLE

pages 172-173

Our sealing clamp is suitable to seal water-bearing as well as gas-bearing pipes. Middle is available up to an outside pipe diameter of 118 mm and in length of 100 and 150 mm.



UNIFIX TAPPING SADDLE

pages 174-175

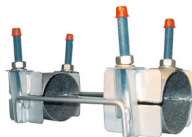
The extremely economical solution for creating additional branches. The clamp as well as the 60 mm wide and 1.5 mm thick mounting bands are completely made of stainless steel.



UNIFIX MAXI

pages 176-203

The classic for civil engineering. For sealing gas- or water-bearing steel, cast iron, ductile cast iron and fibre cement pipes, as well as for repairing PE and PVC pipes. Maxi is available as one, two or three part version, as well as with threaded or flanged outlet.



HOLDERS

pages 218

The suitable solution to protect non-restrained pipe connections from sliding



MAXI BOX S, L, XL

pages 219

With these three repair boxes you are flexible in reacting to various repair situations.



DO YOU KNOW THE EASY FUNCTION?

ALL PRODUCTS WITH THE EASY SYMBOL ARE EQUIPPED WITH EASY GRIP FUNCTION.

The Easy Grip function is an „installation aid“, which makes the installation of stainless steel clamps significantly easier and installation times significantly shorter.

The result are savings in time, costs and energy!

It works as follows:



Side supports in all Middle and Maxi clamps are fitted with hooks.

These hooks are designed for attaching a typical ring wrench or open-end wrench.

The EasyGrip function follows the lever principle: Press the lower edge of the clamp and the combination wrench together with one hand. The mobile holder can now comfortably be placed on the upper edge of the stainless steel clamp using the other hand.
Tighten nuts and done!

**NEVER BEFORE HAS THE INSTALLATION OF STAINLESS STEEL
SEALING CLAMPS BEEN SO EASY!**

UNIFIX MINI – SEALING CLAMPS OF STAINLESS STEEL

APPLICATION: for sealing holes, cracks and porous areas in water-bearing pipes.

SUITABLE FOR

STEEL PIPES | BLACK STEEL PIPES | STAINLESS STEEL PIPES | COPPER PIPES

and for temporary repairs in cold water areas:

PE PIPES | PVC PIPES | MULTILAYER PIPES

FEATURES OF UNIFIX-MINI CLAMPS:

- **Sealing of holes, cracks and porous areas in water-bearing pipes with a smooth surface.**
- The strong honeycomb structure of the seal (EPDM approved for drinking water systems) provides an improved compensation for pipe irregularities.
- Installation of the Mini clamp in a limited mounting space (7 mm is sufficient!) is easily feasible.
- **Pressure stages:** water PN 10, **temperature:** water up to 90°C
- Sealing band, bridge and threaded bolts of stainless steel.
- Fully glued gasket.
- Extremely easy installation.
- **Two lengths of clamps: 60 mm (with one bolt) or: 100 mm (with two bolts).**



LENGTH 60 MM

Length [m]	Pipe diameter-Ø [mm]	Code
60	21 – 25	51.01.021025.06
60	26 – 30	51.01.026030.06
60	33 – 37	51.01.033037.06
60	38 – 42	51.01.038042.06
60	42 – 45	51.01.042045.06
60	48 – 51	51.01.048051.06
60	55 – 58	51.01.055058.06
60	60 – 64	51.01.060064.06
60	69 – 73	51.01.069073.06
60	74 – 80	51.01.074080.06
60	87 – 93	51.01.087093.06

LENGTH 100 MM

Length [m]	Pipe diameter-Ø [mm]	Code
100	21 – 25	51.01.021025.10
100	26 – 30	51.01.026030.10
100	33 – 37	51.01.033037.10
100	42 – 45	51.01.042045.10
100	48 – 51	51.01.048051.10
100	55 – 58	51.01.055058.10
100	60 – 64	51.01.060064.10
100	69 – 73	51.01.069073.10
100	74 – 80	51.01.074080.10
100	87 – 93	51.01.087093.10



As standard, all products are fitted with EPDM sealing for drinking water.

The NBR sealing is available at no extra charge. In this case, the article codes start with 50.

ASSEMBLY INSTRUCTIONS FOR UNIFIX MINI

Stainless steel sealing clamps (lengths 60 and 100 mm)

PREPARATION:

1. Clean the pipe around the damaged area to remove dirt.
2. Make sure that the pipe outer diameter corresponds to the range for the respective sealing clamp.
3. The sealing and the pipe can be moistened with soapy water to increase the assembly efficiency.
(mixing ratio 1 (Soap) : 5 (Water))
4. Loosen the nuts on the screws to the end of the thread.

**Assembly steps:**

1. Pull up the stainless steel bridge and open the clamp.



2. Bend the sealing clamp around the pipe and hook in the stainless steel bridge again. Please be sure the damaged spot is as much as possible covered by the sealing sleeve. (The distance between the outer edge of the damaged area and the outer edge of the sealing clamp may not be less than 2 cm each side).

Note: The steps listed above may also be performed next to the repair area and then slide the installed sealing clamp over the damaged area.



3. Tighten the nuts uniformly with a torque of 20 Nm.
After about 15–20 minutes retighten the nuts again with a torque of 20 Nm.
After the repair has been made a compression test must be performed.

UNIFIX MIDDLE – SEALING CLAMPS OF STAINLESS STEEL

EASY
GRIP



APPLICATION: for sealing holes, cracks and porous areas in water- or gas-bearing pipes.

SUITABLE FOR

STEEL PIPE | COPPER PIPE | STAINLESS STEEL PIPE | BLACK STEEL PIPE | CAST IRON PIPE | DUCTILE CAST IRON PIPE | FIBRE CEMENT PIPE

and for temporary repairs in cold water systems:

PE PIPES | PVC PIPES

FEATURES OF UNIFIX-MIDDLE CLAMPS:

- **Suitable for sealing holes, cracks and porous areas in water- or gas-bearing pipes** with a smooth surface.
- The EPDM sealing approved for drinking water or NBR sealing for gas (DIN DVGW). (Caution: for gas-bearing pipes only outside building)
- **Pressure stages:** water PN 16, gas PN 4; **temperatures:** water up to 90°C, gas from -5 to +50°C.
- Sealing band, bridge and threaded bolts of stainless steel 1.4301 (V2A) similar to AISI 304.
- Fully glued gasket
- Threaded bolts with blue Teflon coating and caps for thread protection.
- **In lengths 100 mm (with one threaded bolts) and 150 mm (with two threaded bolts) available.**

On request, clamps with threaded outlet are available!

UNIFIX MIDDLE – SEALING CLAMPS OF STAINLESS STEEL

EASY
GRIP

UNIFIX MIDDLE, LENGTH 100 MM (WITH ONE THREADED BOLT)

Length [m]	Pipe diameter- \varnothing [mm]	Code
100	32 – 36	51.02.032036.10
100	40 – 44	51.02.040044.10
100	44 – 51	51.02.044051.10
100	48 – 55	51.02.048055.10
100	50 – 57	51.02.050057.10
100	52 – 59	51.02.052059.10
100	56 – 63	51.02.056063.10
100	58 – 65	51.02.058065.10
100	60 – 67	51.02.060067.10
100	75 – 83	51.02.075083.10
100	87 – 95	51.02.087095.10
100	108 – 118	51.02.108118.10



UNIFIX MIDDLE, LENGTH 150 MM (WITH TWO THREADED BOLTS)

Length [m]	Pipe diameter- \varnothing [mm]	Code
150	32 – 36	51.02.032036.15
150	40 – 44	51.02.040044.15
150	44 – 51	51.02.044051.15
150	48 – 55	51.02.048055.15
150	50 – 57	51.02.050057.15
150	52 – 59	51.02.052059.15
150	56 – 63	51.02.056063.15
150	58 – 65	51.02.058065.15
150	60 – 67	51.02.060067.15
150	75 – 83	51.02.075083.15
150	87 – 95	51.02.087095.15
150	108 – 118	51.02.108118.15



As standard, all products are fitted with EPDM sealing for drinking water.

The NBR sealing for water and gas is available at no extra charge.

In this case, the article codes start with 50.

UNIFIX TAPPING SADDLES WITH FEMALE THREAD



A cost-effective alternative for creating branches!



FEATURES OF UNIFIX TAPPING SADDLES WITH FEMALE THREAD

- Suitable for creating for making branches of water- or gas-bearing pipes.
- The tapping saddles are made of stainless steel 1.4301 (V2A) similar to AISI 304 and are available with EPDM sealing (for drinking water) or NBR sealing (for gas). (Caution: only for gas-bearing pipes outside buildings)
- The mounting bands are also made of stainless steel and lined inside with a smooth rubber collar. This prevents damage, particularly in plastic pipes and prevents the tapping saddle from slipping.

LENGTH UPPER SHELL:: 125 MM AT BRANCHES UP TO 1 1/4"; 150 MM AT BRANCHES UP TO 1 1/2"

Length [m]	Thread size [inch]	Code
88 – 110 DN 80	1/2"	51.21.088110.12.1
	3/4"	51.21.088110.12.2
	1"	51.21.088110.12.3
	1 1/4"	51.21.088110.12.4
108 – 134 DN 100	1/2"	51.21.108134.12.1
	3/4"	51.21.108134.12.2
	1"	51.21.108134.12.3
	1 1/4"	51.21.108134.12.4
	1 1/2"	51.21.108134.12.5
	2"	51.21.108134.12.6
114 – 139 DN 125	1/2"	51.21.114139.12.1
	3/4"	51.21.114139.12.2
	1"	51.21.114139.12.3
	1 1/4"	51.21.114139.12.4
	1 1/2"	51.21.114139.12.5
	2"	51.21.114139.12.6

LENGTH UPPER SHELL:: 125 MM AT BRANCHES UP TO 1 1/4", 150 MM AT BRANCHES UP TO 1 1/2"

Length [m]	Thread size [inch]	Code
138 – 160 DN 150	1/2"	51.21.138160.15.1
	3/4"	51.21.138160.15.2
	1"	51.21.138160.15.3
	1 1/4"	51.21.138160.15.4
	1 1/2"	51.21.138160.15.5
	2"	51.21.138160.15.6
159 – 180 DN 175	1/2"	51.21.159180.15.1
	3/4"	51.21.159180.15.2
	1"	51.21.159180.15.3
	1 1/4"	51.21.159180.15.4
	1 1/2"	51.21.159180.15.5
	2"	51.21.159180.15.6
190 – 218 DN 200	1/2"	51.21.190218.15.1
	3/4"	51.21.190218.15.2
	1"	51.21.190218.15.3
	1 1/4"	51.21.190218.15.4
	1 1/2"	51.21.190218.15.5
	2"	51.21.190218.15.6
216 – 238 DN 225	1/2"	51.21.216238.15.1
	3/4"	51.21.216238.15.2
	1"	51.21.216238.15.3
	1 1/4"	51.21.216238.15.4
	1 1/2"	51.21.216238.15.5
	2"	51.21.216238.15.6
230 – 260 DN 250	1/2"	51.21.230260.15.1
	3/4"	51.21.230260.15.2
	1"	51.21.230260.15.3
	1 1/4"	51.21.230260.15.4
	1 1/2"	51.21.230260.15.5
	2"	51.21.230260.15.6
265 – 285 DN 275	1/2"	51.21.265285.15.1
	3/4"	51.21.265285.15.2
	1"	51.21.265285.15.3
	1 1/4"	51.21.265285.15.4
	1 1/2"	51.21.265285.15.5
	2"	51.21.265285.15.6

As standard, all products are fitted with EPDM sealing for drinking water. The NBR sealing for water and gas is available at no extra charge. In this case, the article codes start with 50.

UNIFIX MAXI

Suitable for sealing water- or gas-bearing pipes

Available in one, two or three part versions, or with threaded or flanged outlet!

SUITABLE FOR

STEEL PIPES | CAST IRON PIPES | DUCTILE CAST IRON PIPES | FIBRE-CEMENT PIPES

and for sealing in cold water areas

PE PIPES | PVC PIPES

Unifix Maxi clamps can be used in the case of the following damage or installation situations:



FEATURES OF UNIFIX MAXI CLAMPS

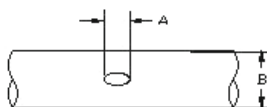
- **Suitable for sealing water- or gas-bearing pipes (note: gas-bearing pipes only outside buildings).**
- **Our sealing clamps are 100% made of 1.4301 (V2A) stainless steel** - similar to AISI 304, and are suitable for quick and permanent repairs of cracked, perforated or porous pipes. For applications that require higher overall strength (wastewater treatment plants, chemical industry, increased chloride content) we offer Maxi clamps made of stainless steel V4A - AISI316.
- **The bolts** are welded to the clamp, so only the stainless steel bridge is movable. This prevents any part of the clamp from getting lost during assembly work.
- The welding during manufacturing is performed by robots to ensure continuous precision and quality (welding as per EN15614-1). After welding process, the repair clamps are passivated to protect them against corrosion.
- **The bolts** are Teflon coated. This ensures lifelong durability.
- **The nuts** are passivated and guarantee free movement.
- The mounting range is embossed on the sealing clamp and thus legible for many years after its installation.
- All products are standard equipped with EPDM seals for drinking water, but are also available with NBR seals for gas (DIN DVGW tested) or viton seals upon request.
- Regular tests ensure the high quality of the GEBU Unifix series.

SELECTING THE RIGHT MAXI CLAMP WITH THE RIGHT LENGTH

In the following is an overview of the dimensions for which you can use Maxi clamps in one-, two- or three-part versions.

Range: sections [mm]	Maxi 1 (one-part)	Maxi 2 (two-part)	Maxi 3 (three-part)
48–87	X		
88–269	X	X	
270–350	X	X	X
351–835		X	X
836–970			X

To determine the correct length of the sealing clamp, add the size of the damaged area (A) and the pipe diameter (B). In the case of PE pipes, add 50% of their value to the sum obtained.



TEMPERATURES: Water up to 90°C, gas from -5 to +50°C

PRESSURE STAGES:

The permissible pressure stages vary depending on the type of pipe, its outer diameter, type of damage and the use of one-part or multi-part sealing clamp. The following values should be taken as a basis:

Pipe outer-Ø [mm]	Pressure stage [bar]	
	Water	Gas
MAXI 1 (one-part clamp)		
48–102	16	5
106–230	16	4
237–350	10	3

Pipe outer-Ø [mm]	Pressure stage [bar]	
	Water	Gas
MAXI 2 (two-part clamp)		
88–282	16	4
295–510	10	3
510–530	6	–

Pipe outer-Ø [mm]	Pressure stage [bar]	
	Water	Gas
MAXI 3 (three-part clamp)		
270–460	10	3
475–630	6	2

Pipe outer-Ø [mm]	Pressure stage [bar]	
	Water	Gas
MAXI 3 (three-part clamp)		
654–780	4	–
813–1000	2	–

LENGTH / BOLTS:

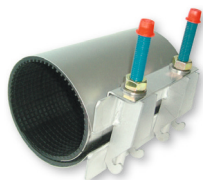
Length [mm]	Number of bolts
150	2
200	2
300	3
400	4
500	5

Length [mm]	Number of bolts
600	6
700	7
800	8
900	9
1000	10

MAXI 1 - ONE-PART STAINLESS STEEL SEALING CLAMP

EASY
GRIP

INSTALLATION LENGTH: 150 M, WITH TWO BOLTS



DN	Installation length [mm]	Pipe outer-Ø [mm]	Code
40	150	48 – 55	51.03.048055.15
	150	52 – 59	51.03.052059.15
50	150	60 – 67	51.03.060067.15
	150	67 – 74	51.03.067074.15
65	150	70 – 77	51.03.070077.15
	150	73 – 80	51.03.073080.15
	150	76 – 85	51.03.076085.15
	150	82 – 90	51.03.082090.15
80	150	87 – 95	51.03.087095.15
	150	90 – 98	51.03.090098.15
	150	95 – 105	51.03.095105.15
	150	98 – 108	51.03.098108.15
	150	102 – 112	51.03.102112.15
100	150	106 – 116	51.03.106116.15
	150	108 – 118	51.03.108118.15
	150	113 – 123	51.03.113123.15
	150	118 – 128	51.03.118128.15
	150	120 – 131	51.03.120131.15
125	150	125 – 135	51.03.125135.15
	150	132 – 144	51.03.132144.15
	150	135 – 145	51.03.135145.15
150	150	140 – 152	51.03.140152.15
	150	151 – 161	51.03.151161.15
	150	159 – 170	51.03.159170.15
	150	165 – 176	51.03.165176.15
	150	167 – 177	51.03.167177.15
	150	170 – 182	51.03.170182.15

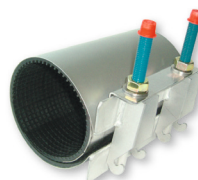
As standard, all products are fitted with EPDM sealing for drinking water.
The NBR sealing for water and gas is available at no extra charge.
In this case, the article codes start with 50.

MAXI 1 - ONE-PART STAINLESS STEEL SEALING CLAMP

EASY
GRIP

INSTALLATION LENGTH: 200 M, WITH TWO BOLTS

DN	Installation length [mm]	Pipe outer-Ø [mm]	Code
40	200	48 – 55	51.03.048055.20
	200	52 – 59	51.03.052059.20
50	200	60 – 67	51.03.060067.20
	200	67 – 74	51.03.067074.20
65	200	70 – 77	51.03.070077.20
	200	73 – 80	51.03.073080.20
	200	76 – 85	51.03.076085.20
	200	82 – 90	51.03.082090.20
80	200	87 – 95	51.03.087095.20
	200	90 – 98	51.03.090098.20
	200	95 – 105	51.03.095105.20
	200	98 – 108	51.03.098108.20
	200	102 – 112	51.03.102112.20
100	200	106 – 116	51.03.106116.20
	200	108 – 118	51.03.108118.20
	200	113 – 123	51.03.113123.20
	200	118 – 128	51.03.118128.20
	200	120 – 131	51.03.120131.20
125	200	125 – 135	51.03.125135.20
	200	132 – 144	51.03.132144.20
	200	135 – 145	51.03.135145.20
	200	140 – 152	51.03.140152.20
150	200	151 – 161	51.03.151161.20
	200	159 – 170	51.03.159170.20
	200	165 – 176	51.03.165176.20
	200	167 – 177	51.03.167177.20
	200	170 – 182	51.03.170182.20
	200	174 – 184	51.03.174184.20
	200	176 – 186	51.03.176186.20
	200	180 – 191	51.03.180191.20
175	200	186 – 196	51.03.186196.20
	200	193 – 203	51.03.193203.20
	200	200 – 212	51.03.200212.20
200	200	209 – 220	51.03.209220.20
	200	215 – 225	51.03.215225.20
	200	219 – 230	51.03.219230.20



As standard, all products are fitted with EPDM sealing for drinking water.
The NBR sealing for water and gas is available at no extra charge.
In this case, the article codes start with 50.

MAXI 1 – ONE-PART STAINLESS STEEL SEALING CLAMP

EASY
GRIP

INSTALLATION LENGTH: 300 M, WITH THREE BOLTS



DN	Installation length [mm]	Pipe outer-Ø [mm]	Code
50	300	60 – 67	51.03.060067.30
	300	67 – 74	51.03.067074.30
65	300	70 – 77	51.03.070077.30
	300	73 – 80	51.03.073080.30
	300	76 – 85	51.03.076085.30
	300	82 – 90	51.03.082090.30
80	300	87 – 95	51.03.087095.30
	300	90 – 98	51.03.090098.30
	300	95 – 105	51.03.095105.30
	300	98 – 108	51.03.098108.30
	300	102 – 112	51.03.102112.30
	300	106 – 116	51.03.106116.30
100	300	108 – 118	51.03.108118.30
	300	113 – 123	51.03.113123.30
	300	118 – 128	51.03.118128.30
	300	120 – 131	51.03.120131.30
	300	125 – 135	51.03.125135.30
125	300	132 – 144	51.03.132144.30
	300	135 – 145	51.03.135145.30
	300	140 – 152	51.03.140152.30
150	300	151 – 161	51.03.151161.30
	300	159 – 170	51.03.159170.30
	300	165 – 176	51.03.165176.30
	300	167 – 177	51.03.167177.30
	300	170 – 182	51.03.170182.30
	300	174 – 184	51.03.174184.30
	300	176 – 186	51.03.176186.30
	300	180 – 191	51.03.180191.30
175	300	186 – 196	51.03.186196.30
	300	193 – 203	51.03.193203.30
	300	200 – 212	51.03.200212.30
200	300	209 – 220	51.03.209220.30
	300	215 – 225	51.03.215225.30
	300	219 – 230	51.03.219230.30
	300	222 – 233	51.03.222233.30
	300	228 – 240	51.03.228240.30
	300	232 – 242	51.03.232242.30
	300	237 – 247	51.03.237247.30
	300	239 – 249	51.03.239249.30
	300	243 – 253	51.03.243253.30
	300	250 – 260	51.03.250260.30
	300	252 – 262	51.03.252262.30
	300	261 – 271	51.03.261271.30
	300	266 – 276	51.03.266276.30
250	300	270 – 280	51.03.270280.30
	300	273 – 284	51.03.273284.30
	300	280 – 293	51.03.280293.30
	300	290 – 300	51.03.290300.30
	300	300 – 310	51.03.300310.30
	300	310 – 320	51.03.310320.30

As standard, all products are fitted with EPDM sealing for drinking water.
The NBR sealing for water and gas is available at no extra charge.
In this case, the article codes start with 50.

MAXI 1 - ONE-PART STAINLESS STEEL SEALING CLAMP

EASY
GRIP

INSTALLATION LENGTH: 400M, WITH FOUR BOLTS

DN	Installation length [mm]	Pipe outer-Ø [mm]	Code
65	400	73 – 80	51.03.073080.40
	400	76 – 85	51.03.076085.40
	400	82 – 90	51.03.082090.40
80	400	87 – 95	51.03.087095.40
	400	90 – 98	51.03.090098.40
	400	95 – 105	51.03.095105.40
	400	98 – 108	51.03.098108.40
	400	102 – 112	51.03.102112.40
100	400	106 – 116	51.03.106116.40
	400	108 – 118	51.03.108118.40
	400	113 – 123	51.03.113123.40
	400	118 – 128	51.03.118128.40
	400	120 – 131	51.03.120131.40
125	400	125 – 135	51.03.125135.40
	400	132 – 144	51.03.132144.40
	400	135 – 145	51.03.135145.40
	400	140 – 152	51.03.140152.40
150	400	151 – 161	51.03.151161.40
	400	159 – 170	51.03.159170.40
	400	165 – 176	51.03.165176.40
	400	167 – 177	51.03.167177.40
	400	170 – 182	51.03.170182.40
	400	174 – 184	51.03.174184.40
	400	176 – 186	51.03.176186.40
175	400	180 – 191	51.03.180191.40
	400	186 – 196	51.03.186196.40
	400	193 – 203	51.03.193203.40
200	400	200 – 212	51.03.200212.40
	400	209 – 220	51.03.209220.40
	400	215 – 225	51.03.215225.40
	400	219 – 230	51.03.219230.40
	400	222 – 233	51.03.222233.40
	400	228 – 240	51.03.228240.40
	400	232 – 242	51.03.232242.40
	400	237 – 247	51.03.237247.40
	400	239 – 249	51.03.239249.40
	400	243 – 253	51.03.243253.40
	400	250 – 260	51.03.250260.40
	400	252 – 262	51.03.252262.40
	400	261 – 271	51.03.261271.40
250	400	266 – 276	51.03.266276.40
	400	270 – 280	51.03.270280.40
	400	273 – 284	51.03.273284.40
	400	280 – 293	51.03.280293.40
	400	290 – 300	51.03.290300.40
300	400	300 – 310	51.03.300310.40
	400	310 – 320	51.03.310320.40
	400	315 – 326	51.03.315326.40
	400	320 – 330	51.03.320330.40
	400	325 – 335	51.03.325335.40
	400	334 – 346	51.03.334346.40
	400	340 – 350	51.03.340350.40
	400	350 – 360	51.03.350360.40

As standard, all products are fitted with EPDM sealing for drinking water.

The NBR sealing for water and gas is available at no extra charge.

In this case, the article codes start with 50.

MAXI 1 – ONE-PART STAINLESS STEEL SEALING CLAMP

EASY
GRIP

INSTALLATION LENGTH: 500 M, WITH FIVE BOLTS

DN	Installation length [mm]	Pipe outer-Ø [mm]	Code
100	500	108 – 118	51.03.108118.50
	500	113 – 123	51.03.113123.50
	500	118 – 128	51.03.118128.50
	500	120 – 131	51.03.120131.50
	500	125 – 135	51.03.125135.50
125	500	132 – 144	51.03.132144.50
	500	135 – 145	51.03.135145.50
	500	140 – 152	51.03.140152.50
150	500	151 – 161	51.03.151161.50
	500	159 – 170	51.03.159170.50
	500	165 – 176	51.03.165176.50
	500	167 – 177	51.03.167177.50
	500	170 – 182	51.03.170182.50
	500	174 – 184	51.03.174184.50
	500	176 – 186	51.03.176186.50
	500	180 – 191	51.03.180191.50
175	500	186 – 196	51.03.186196.50
	500	193 – 203	51.03.193203.50
	500	200 – 212	51.03.200212.50
200	500	209 – 220	51.03.209220.50
	500	215 – 225	51.03.215225.50
	500	219 – 230	51.03.219230.50
	500	222 – 233	51.03.222233.50
	500	228 – 240	51.03.228240.50
	500	232 – 242	51.03.232242.50
	500	237 – 247	51.03.237247.50
	500	239 – 249	51.03.239249.50
	500	243 – 253	51.03.243253.50
	500	250 – 260	51.03.250260.50
	500	252 – 262	51.03.252262.50
	500	261 – 271	51.03.261271.50
250	500	266 – 276	51.03.266276.50
	500	270 – 280	51.03.270280.50
	500	273 – 284	51.03.273284.50
	500	280 – 293	51.03.280293.50
	500	290 – 300	51.03.290300.50
	500	300 – 310	51.03.300310.50
300	500	310 – 320	51.03.310320.50
	500	315 – 326	51.03.315326.50
	500	320 – 330	51.03.320330.50
	500	325 – 335	51.03.325335.50
	500	334 – 346	51.03.334346.50
	500	340 – 350	51.03.340350.50
	500	350 – 360	51.03.350360.50

MAXI 1 - ONE-PART STAINLESS STEEL SEALING CLAMP

EASY
GRIP

INSTALLATION LENGTH: 600M, WITH SIX BOLTS

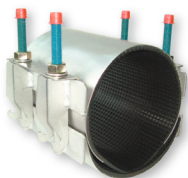
DN	Installation length [mm]	Pipe outer-Ø [mm]	Code
200	600	215 – 225	51.03.215225.60
	600	219 – 230	51.03.219230.60
	600	222 – 233	51.03.222233.60
	600	228 – 240	51.03.228240.60
	600	232 – 242	51.03.232242.60
	600	237 – 247	51.03.237247.60
	600	239 – 249	51.03.239249.60
	600	243 – 253	51.03.243253.60
	600	250 – 260	51.03.250260.60
	600	252 – 262	51.03.252262.60
	600	261 – 271	51.03.261271.60
	600	266 – 276	51.03.266276.60
250	600	270 – 280	51.03.270280.60
	600	273 – 284	51.03.273284.60
	600	280 – 293	51.03.280293.60
	600	290 – 300	51.03.290300.60
	600	300 – 310	51.03.300310.60
	600	310 – 320	51.03.310320.60
300	600	315 – 326	51.03.315326.60
	600	320 – 330	51.03.320330.60
	600	325 – 335	51.03.325335.60
	600	334 – 346	51.03.334346.60
	600	340 – 350	51.03.340350.60
	600	350 – 360	51.03.350360.60

As standard, all products are fitted with EPDM sealing for drinking water.
The NBR sealing for water and gas is available at no extra charge.
In this case, the article codes start with 50.

MAXI 2 – TWO-PART STAINLESS STEEL SEALING CLAMP

EASY
GRIP

INSTALLATION LENGTH: 200 M, WITH TWO BOLTS



DN	Installation length [mm]	Pipe outer-Ø [mm]	Code
80	200	88 – 110	51.04.088110.20
	200	100 – 120	51.04.100120.20
100	200	108 – 128	51.04.108128.20
	200	112 – 134	51.04.112134.20
	200	120 – 140	51.04.120140.20
125	200	133 – 156	51.04.133156.20
	200	138 – 160	51.04.138160.20
150	200	158 – 180	51.04.158180.20
	200	165 – 185	51.04.165185.20
	200	168 – 190	51.04.168190.20
	200	176 – 196	51.04.176196.20
175	200	190 – 210	51.04.190210.20
	200	195 – 217	51.04.195217.20
200	200	210 – 230	51.04.210230.20
	200	216 – 238	51.04.216238.20
	200	225 – 246	51.04.225246.20
	200	230 – 250	51.04.230250.20

INSTALLATION LENGTH: 300 M, WITH THREE BOLTS

DN	Installation length [mm]	Pipe outer-Ø [mm]	Code
80	300	88 – 110	51.04.088110.30
	300	100 – 120	51.04.100120.30
100	300	108 – 128	51.04.108128.30
	300	112 – 134	51.04.112134.30
	300	120 – 140	51.04.120140.30
125	300	133 – 156	51.04.133156.30
	300	138 – 160	51.04.138160.30
150	300	158 – 180	51.04.158180.30
	300	165 – 185	51.04.165185.30
	300	168 – 190	51.04.168190.30
	300	176 – 196	51.04.176196.30
175	300	190 – 210	51.04.190210.30
	300	195 – 217	51.04.195217.30
200	300	210 – 230	51.04.210230.30
	300	216 – 238	51.04.216238.30
	300	225 – 246	51.04.225246.30
	300	230 – 250	51.04.230250.30
	300	238 – 260	51.04.238260.30
	300	250 – 271	51.04.250271.30
	300	269 – 289	51.04.269289.30
250	300	273 – 293	51.04.273293.30
	300	282 – 302	51.04.282302.30
	300	295 – 315	51.04.295315.30

MAXI 2 - TWO-PART STAINLESS STEEL SEALING CLAMP

EASY
GRIP

INSTALLATION LENGTH: 300 M, WITH THREE BOLTS

DN	Installation length [mm]	Pipe outer-Ø [mm]	Code
300	300	314 – 335	51.04.314335.30
	300	322 – 344	51.04.322344.30
	300	337 – 358	51.04.337358.30
350	300	347 – 368	51.04.347368.30
	300	365 – 385	51.04.365385.30

LENGTH: 400 M, WITH FOUR BOLTS

DN	Installation length [mm]	Pipe outer-Ø [mm]	Code
80	400	88 – 110	51.04.088110.40
	400	100 – 120	51.04.100120.40
100	400	108 – 128	51.04.108128.40
	400	112 – 134	51.04.112134.40
	400	120 – 140	51.04.120140.40
125	400	133 – 156	51.04.133156.40
	400	138 – 160	51.04.138160.40
150	400	158 – 180	51.04.158180.40
	400	165 – 185	51.04.165185.40
	400	168 – 190	51.04.168190.40
	400	176 – 196	51.04.176196.40
175	400	190 – 210	51.04.190210.40
	400	195 – 217	51.04.195217.40
200	400	210 – 230	51.04.210230.40
	400	216 – 238	51.04.216238.40
	400	225 – 246	51.04.225246.40
	400	230 – 250	51.04.230250.40
	400	238 – 260	51.04.238260.40
	400	250 – 271	51.04.250271.40
	400	269 – 289	51.04.269289.40
250	400	273 – 293	51.04.273293.40
	400	282 – 302	51.04.282302.40
	400	295 – 315	51.04.295315.40
300	400	314 – 335	51.04.314335.40
	400	322 – 344	51.04.322344.40
	400	337 – 358	51.04.337358.40
350	400	347 – 368	51.04.347368.40
	400	365 – 385	51.04.365385.40
	400	382 – 402	51.04.382402.40
	400	396 – 420	51.04.396420.40
400	400	410 – 430	51.04.410430.40
	400	420 – 440	51.04.420440.40

As standard, all products are fitted with EPDM sealing for drinking water.

The NBR sealing for water and gas is available at no extra charge.

In this case, the article codes start with 50.

MAXI 2 - TWO-PART STAINLESS STEEL SEALING CLAMP

EASY
GRIP

INSTALLATION LENGTH: 500 M, WITH FIVE BOLTS

DN	Installation length [mm]	Pipe outer-Ø [mm]	Code
80	500	88 – 110	51.04.088110.50
	500	100 – 120	51.04.100120.50
100	500	108 – 128	51.04.108128.50
	500	112 – 134	51.04.112134.50
	500	120 – 140	51.04.120140.50
125	500	133 – 156	51.04.133156.50
	500	138 – 160	51.04.138160.50
150	500	158 – 180	51.04.158180.50
	500	165 – 185	51.04.165185.50
	500	168 – 190	51.04.168190.50
	500	176 – 196	51.04.176196.50
175	500	190 – 210	51.04.190210.50
	500	195 – 217	51.04.195217.50
200	500	210 – 230	51.04.210230.50
	500	216 – 238	51.04.216238.50
	500	225 – 246	51.04.225246.50
	500	230 – 250	51.04.230250.50
	500	238 – 260	51.04.238260.50
	500	250 – 271	51.04.250271.50
	500	269 – 289	51.04.269289.50
250	500	273 – 293	51.04.273293.50
	500	282 – 302	51.04.282302.50
	500	295 – 315	51.04.295315.50
300	500	314 – 335	51.04.314335.50
	500	322 – 344	51.04.322344.50
	500	337 – 358	51.04.337358.50
350	500	347 – 368	51.04.347368.50
	500	365 – 385	51.04.365385.50
	500	382 – 402	51.04.382402.50
	500	396 – 420	51.04.396420.50
400	500	410 – 430	51.04.410430.50
	500	420 – 440	51.04.420440.50
	500	435 – 455	51.04.435455.50
	500	450 – 470	51.04.450470.50
450	500	457 – 477	51.04.457477.50
	500	485 – 508	51.04.485508.50
500	500	510 – 530	51.04.510530.50

MAXI 2 - TWO-PART STAINLESS STEEL SEALING CLAMP

EASY
GRIP

INSTALLATION LENGTH: 600 M, WITH SIX BOLTS

DN	Installation length [mm]	Pipe outer-Ø [mm]	Code
300	600	314 – 335	51.04.314335.60
	600	322 – 344	51.04.322344.60
	600	337 – 358	51.04.337358.60
350	600	347 – 368	51.04.347368.60
	600	365 – 385	51.04.365385.60
	600	382 – 402	51.04.382402.60
	600	396 – 420	51.04.396420.60
400	600	410 – 430	51.04.410430.60
	600	420 – 440	51.04.420440.60
	600	435 – 455	51.04.435455.60
	600	450 – 470	51.04.450470.60
450	600	457 – 477	51.04.457477.60
	600	485 – 508	51.04.485508.60
500	600	510 – 530	51.04.510530.60

As standard, all products are fitted with EPDM sealing for drinking water.

The NBR sealing for water and gas is available at no extra charge.

In this case, the article codes start with 50.

Up to 855 mm outside pipe diameter and installation length 800 mm also available upon request.

MAXI 3 - THREE-PART STAINLESS STEEL SEALING CLAMP

EASY
GRIP

INSTALLATION LENGTH: 300 M, WITH THREE BOLTS

DN	Installation length [mm]	Pipe outer-Ø [mm]	Code
250	300	270 – 300	51.05.270300.30
300	300	310 – 340	51.05.310340.30
	300	335 – 365	51.05.335365.30
350	300	340 – 370	51.05.340370.30
	300	360 – 390	51.05.360390.30
	300	385 – 415	51.05.385415.30
	300	395 – 425	51.05.395425.30
400	300	400 – 430	51.05.400430.30
	300	410 – 440	51.05.410440.30
	300	430 – 460	51.05.430460.30
	300	435 – 465	51.05.435465.30
450	300	440 – 470	51.05.440470.30
	300	460 – 490	51.05.460490.30

INSTALLATION LENGTH: 400 M, WITH FOUR BOLTS

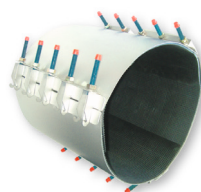
DN	Installation length [mm]	Pipe outer-Ø [mm]	Code
250	400	270 – 300	51.05.270300.40
300	400	310 – 340	51.05.310340.40
	400	335 – 365	51.05.335365.40
350	400	340 – 370	51.05.340370.40
	400	360 – 390	51.05.360390.40
	400	385 – 415	51.05.385415.40
	400	395 – 425	51.05.395425.40
400	400	400 – 430	51.05.400430.40
	400	410 – 440	51.05.410440.40
	400	430 – 460	51.05.430460.40
	400	435 – 465	51.05.435465.40
450	400	440 – 470	51.05.440470.40
	400	460 – 490	51.05.460490.40
	400	475 – 505	51.05.475505.40
500	400	485 – 515	51.05.485515.40

MAXI 3 - THREE-PART STAINLESS STEEL SEALING CLAMP

EASY
GRIP

INSTALLATION LENGTH: 500 M, WITH FIVE BOLTS

DN	Installation length [mm]	Pipe outer-Ø [mm]	Code
350	500	360 – 390	51.05.360390.50
	500	385 – 415	51.05.385415.50
	500	395 – 425	51.05.395425.50
400	500	400 – 430	51.05.400430.50
	500	410 – 440	51.05.410440.50
	500	430 – 460	51.05.430460.50
	500	435 – 465	51.05.435465.50
450	500	440 – 470	51.05.440470.50
	500	460 – 490	51.05.460490.50
	500	475 – 505	51.05.475505.50
500	500	485 – 515	51.05.485515.50
	500	510 – 540	51.05.510540.50
	500	530 – 560	51.05.530560.50



INSTALLATION LENGTH: 600 M, WITH SIX BOLTS

DN	Installation length [mm]	Pipe outer-Ø [mm]	Code
400	600	435 – 465	51.05.435465.60
450	600	440 – 470	51.05.440470.60
	600	460 – 490	51.05.460490.60
	600	475 – 505	51.05.475505.60
500	600	485 – 515	51.05.485515.60
	600	510 – 540	51.05.510540.60
	600	530 – 560	51.05.530560.60
	600	535 – 565	51.05.535565.60
	600	555 – 585	51.05.555585.60
	600	570 – 600	51.05.570600.60
600	600	585 – 615	51.05.585615.60
	600	610 – 640	51.05.610640.60
	600	620 – 650	51.05.620650.60
	600	630 – 660	51.05.630660.60
	600	654 – 684	51.05.654684.60
700	600	702 – 732	51.05.702732.60
	600	711 – 741	51.05.711741.60
750	600	747 – 777	51.05.747777.60
	600	780 – 810	51.05.780810.60
800	600	813 – 843	51.05.813843.60
	600	852 – 882	51.05.852882.60
	600	864 – 894	51.05.864894.60
900	600	900 – 930	51.05.900930.60
	600	925 – 955	51.05.925955.60
	600	945 – 975	51.05.945975.60
	600	970 – 1000	51.05.9701000.60

As standard, all products are fitted with EPDM sealing for drinking water.
The NBR sealing for water and gas is available at no extra charge.
In this case, the article codes start with 50.

MAXI 3 - THREE-PART STAINLESS STEEL SEALING CLAMP
**EASY
GRIP**
INSTALLATION LENGTH: 700 MM, WITH SEVEN BOLTS

DN	Installation length [mm]	Pipe outer-Ø [mm]	Code
400	700	435 - 465	51.05.435465.70
450	700	440 - 470	51.05.440470.70
	700	460 - 490	51.05.460490.70
	700	475 - 505	51.05.475505.70
500	700	485 - 515	51.05.485515.70
	700	510 - 540	51.05.510540.70
	700	530 - 560	51.05.530560.70
	700	535 - 565	51.05.535565.70
	700	555 - 585	51.05.555585.70
	700	570 - 600	51.05.570600.70
600	700	585 - 615	51.05.585615.70
	700	610 - 640	51.05.610640.70
	700	620 - 650	51.05.620650.70
	700	630 - 660	51.05.630660.70
	700	654 - 684	51.05.654684.70
700	700	702 - 732	51.05.702732.70
	700	711 - 741	51.05.711741.70
750	700	747 - 777	51.05.747777.70
	700	780 - 810	51.05.780810.70
800	700	813 - 843	51.05.813843.70
	700	852 - 882	51.05.852882.70
	700	864 - 894	51.05.864894.70
900	700	900 - 930	51.05.900930.70
	700	925 - 955	51.05.925955.70
	700	945 - 975	51.05.945975.70
	700	970 - 1000	51.05.9701000.70

As standard, all products are fitted with EPDM sealing for drinking water.

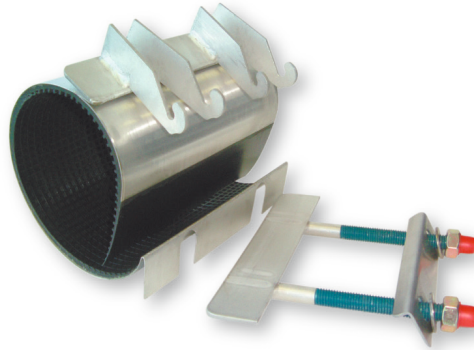
The NBR sealing for water and gas is available at no extra charge.

In this case, the article codes start with 50.

UNIFIX MAXI CLAMP – SLIM VERSION**EASY
GRIP**

All Maxi clamps are also available in the following special versions - the SLIM version.

The Slim version is a perfect solution for places where there is not enough space for repair.

**SLIM VERSION - FEATURES****Are you installing in tight spaces?**

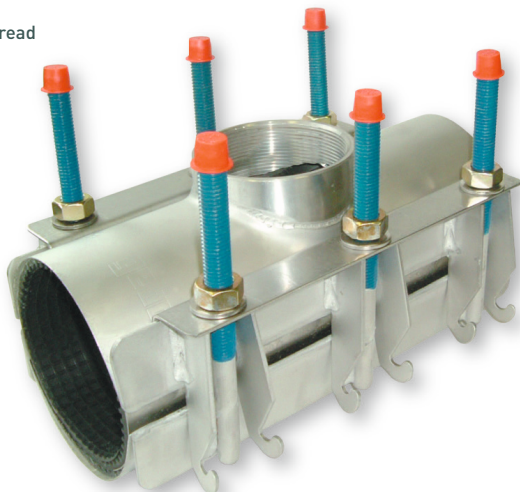
With the Slim you can simply unhook the plate with the mounting bolts leaving you with only a 10 mm opening required for installation.

UNIFIX MAXI - UNIFIX MAXI CLAMPS WITH DIFFERENT TYPES OF OUTLETS



One-, two- or three-part Maxi clamps are available in versions with different outlets:

- with female thread,
- with male thread,
- with female/male thread



TECHNICAL SPECIFICATIONS: UNIFIX MAXI WITH THREADED OUTLET

SEALING CLAMP: stainless steel 1.4301 (V2A) similar to AISI 304

BOLTS: stainless steel 1.4301 (V2A) similar to AISI 304; dimensions – depending on the diameter – M12, M14 or M16.

NUTS: stainless steel 1.4301 (V2A) similar to AISI 304; sizes: M12, M14 or M16.

The nuts are passivated and guarantee free movement.

BRIDGE: stainless steel 1.4301 (V2A) similar to AISI 304

BRIDGE PLATE: stainless steel 1.4301 (V2A) similar to AISI 304. The bridge plate is vulcanised into the sealing.

SEALING: As standard, EPDM sealing (for drinking water) is used, alternatively NBR sealing is provided (for gas). The sealing features a honeycombed structure and ensures optimal sealing together with the O-ring seal at the outlet.

After welding, all stainless steel parts are passivated in order to achieve a high degree of protection against corrosion.

All products are also available in stainless steel V4A.

UNIFIX MAXI – UNIFIX MAXI CLAMPS WITH DIFFERENT TYPES OF OUTLETS

EASY
GRIP

THREADED OUTLETS:

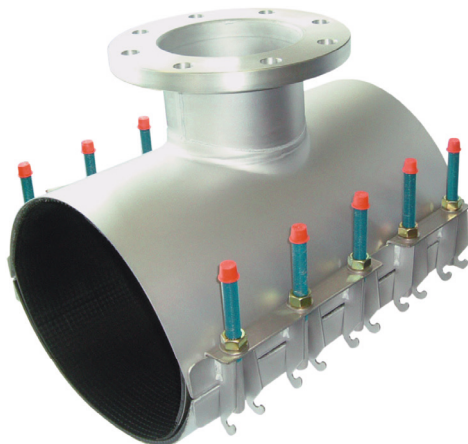
Female thread: 1/2", 3/4", 1", 1 1/4", 1 1/2", 2", 2 1/2", 3", 4"**Male thread:** 2 1/2", 3"**Female/male thread:** 2" female, 2 1/2" maleMINIMUM DIMENSIONS PIPE OUTER-Ø AND MINIMUM NEEDED INSTALLATION LENGTHS
ON THREADED OUTLETS:

Threaded connector	Middle respectively Maxi 1*	Installation length [mm]	Maxi 2	Installation length [mm]
	Pipe outer-Ø [mm]		Pipe outer-Ø [mm]	
1/2"	40 – 44	150	88–110	200
3/4"	48 – 55	150	88–110	200
1"	67 – 74	150	88–110	200
1 1/4"	82 – 89	150	88–110	200
1 1/2"	95–105	150	88–110	200
2"	95–105	150	88–110	200
2 1/2"	108–118	300	108–128	300
3"	–	–	108–128	400
4"	–	–	133–153	400

*** Important: for products with a threaded outlet:**

For pipes with an outside diameter of less than 65 mm (installation length: 15 mm), it is recommended to use the Unifix Middle type. For outside diameter from 65 mm up please ask for type Maxi.

UNIFIX MAXI – UNIFIX MAXI CLAMPS WITH DIFFERENT TYPES OF OUTLETS



TECHNICAL SPECIFICATIONS: UNIFIX MAXI WITH FLANGE CONNECTION

- The flange version is only available for our two- or three-part Maxi clamps and fits ranges from 88–110 mm to 768–798 mm. The installation lengths are optionally 300, 400, 500, 600, 800 and 1000 mm.
- The materials are the same as for Maxi clamps with a threaded outlet with the following addition:
- Information about the welded-on flange: stainless steel 1.4301 (V2A) similar to AISI 304, WIG welded (Wolfram Inert Gas) on the inside and outside to create a full weld of the external body and flange. The absolute overall height of the outlet is approx. 120 mm for flanges to DN 150 and approx. 150 mm for flanges DN 200–DN 300.
- Flange connections: stainless steel 1.4301 (V2A) similar to AISI 304; flanges according to DIN EN 1092-1, from DN50 to DN300.
- After welding, stainless steel parts are passivated in order to achieve a high degree of protection against corrosion.
- All products are also available in stainless steel V4A.
- Outside pipe diameter 545 mm and up is delivered as a three part Maxi as standard version.
- A version with bolts pointed downward is also possible.
- Pressure stages vary depending on the outer diameter of the pipes, materials used and the flange version. The pressures listed in the table are solely intended as a guideline.
- Seal made of EPDM (for drinking water) or alternatively of NBR (for gas)

UNIFIX MAXI WITH FLANGE CONNECTION FOR TWO- OR THREE-PART CLAMPS

EASY
GRIP

PRESSURE TABLE

Pipe outer diameter [mm]	Pressure stage [bar]	
	Water	Gas
88–210	16	4
216–410	10	3
420–798	6	2

MINIMUM REQUIRED OUTSIDE DIAMETER AND MINIMUM REQUIRED LENGTH
FOR MAXI WITH FLANGE OUTLET

Flange size in combination with pipe outer diameter and installation length

Flange	Pipe outer Ø [mm]	Installation length	Flange adapter
DN 50	88 – 110	300	PN 10/16
DN 65	88 – 110	300	PN 10/16
DN 80 PLUS	88 – 110	400	PN 10/16
DN 80	108 – 128	400	PN 10/16
DN 100 PLUS	108 – 128	400	PN 10/16
DN 100	133 – 153	400	PN 10/16
DN 125	135 – 155	400	PN 10/16
DN 150 PLUS	158 – 180	400	PN 10/16
DN 150	169 – 189	400	PN 10/16
DN 200 PLUS	210 – 230	500	PN 10
DN 200, 8 holes	240 – 260	500	PN 10
DN 200, 12 holes	240 – 260	500	PN 16
DN 250 PLUS	240 – 260	600	PN 10
DN 250	315 – 325	600	PN 10
DN 300	upon request		

PLUS = contains a stainless steel reduction piece for a smaller DN size.

UNIFIX MAXI 2 WITH FLANGE OUTLET
**EASY
GRIP**

DN	Pipe outer-Ø [mm]	Installation length [m]					
		300	400	500	600	800	1000
80	88–110	X	X	X	X		
	100–120	X	X	X	X		
100	108–128	X	X	X	X		
	114–134	X	X	X	X		
	120–140	X	X	X	X		
	130–150	X	X	X	X		
125	133–155	X	X	X	X		
	135–155	X	X	X	X		
	140–160	X	X	X	X		
150	158–180	X	X	X	X		
	165–185	X	X	X	X		
	168–189	X	X	X	X		
	170–190	X	X	X	X		
	176–196	X	X	X	X		
	180–200	X	X	X	X		
175	190–210	X	X	X	X		
	195–217	X	X	X	X		
	205–225	X	X	X	X		
200	210–230	X	X	X	X		
	216–238	X	X	X	X		
	225–246	X	X	X	X		
	230–250	X	X	X	X		
	240–260	X	X	X	X		
225	252–272	X	X	X	X		
	260–280	X	X	X	X		
	269–289	X	X	X	X		
250	273–293	X	X	X	X		
	282–302	X	X	X	X		
	295–315	X	X	X	X		

UNIFIX MAXI 2 WITH FLANGE OUTLET

EASY
GRIP

DN	Pipe outer-Ø [mm]	Installation length [m]					
		300	400	500	600	800	1000
300	314–334	X	X	X	X		
	322–344	X	X	X	X		
	335–355	X	X	X	X		
350	347–367		X	X	X		
	350–368		X	X	X		
	360–380		X	X	X		
	365–385		X	X	X	X	
	382–402		X	X	X	X	
	396–420		X	X	X	X	
	404–424		X	X	X	X	
400	410–430		X	X	X	X	
	420–440			X	X	X	
	435–455			X	X	X	
	468–488			X	X	X	
500	485–505			X	X	X	
	527–547				X	X	
	545–575				X	X	
	568–598				X	X	
600	588–618				X	X	
	610–640				X	X	X
	628–658				X	X	X
	648–678					X	X
	668–698					X	X
	688–718					X	X
700	708–738					X	X
	728–758					X	X
750	748–778					X	X
	768–798					X	X

UNIFIX HOLDERS

Use these holders to secure non-restrained pipe connections from sliding.

ABOUT OUR HOLDERS

BOLTS:

Stainless steel 1.4301 (V2A) similar to AISI 304;
M16

STAINLESS STEEL BRIDGE:

Stainless steel 1.4301 (V2A) similar to AISI 304

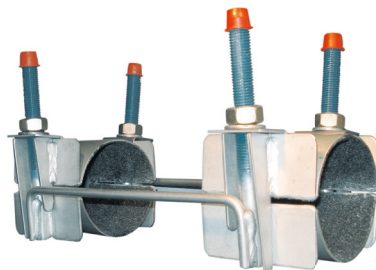
THREADED NUTS:

Stainless steel 1.4301 (V2A) similar to AISI 304.
Size M16, passivated

STAINLESS STEEL BAND + SUPPORT BARS:

Stainless steel 1.4301 (V2A) similar to AISI 304

- After welding all stainless steel parts are passivated to ensure optimal corrosion protection
- Also available in V4A stainless steel
- Inside coating of the stainless steel band: The inside of the stainless steel clamp is taped with a non-skid film (similar to emery paper). This tightly secures the pipes and even thin-walled pipes are not damaged.
- The holders are available from DN 100 bis DN 600
- Installation lengths and exact dimensions available upon request
- Special production on specific customer request



UNIFIX-MAXI BOX S

EASY
GRIP

Our **economic** repair box. Nine different sizes of Unifix Maxi stainless steel repair clamps for all types of pipe from 60 mm to 170 mm outside-Ø – **ALL IN ONE BOX!**

SUITABLE FOR:

STEEL PIPE | CAST IRON PIPE | DUKTILE CAST IRON PIPE | FIBRE CEMENT PIPE

PE-PIPE | PVC-PIPE

COLD WATER AREA

ABOUT OUR UNIFIX MAXI BOX S

This repair box contains nine different repair clamps (all in 200 mm installation length) for various pipes from DN 50 to DN 150. The following table indicates which types of pipe are covered by which sizes of sealing clamp

CAUTION: The nine stainless steel clamps are not intended to be combined

WEIGHT: 22 kg

BOX DIMENSIONS: 600 x 400 x 230 mm

BOLTS: Stainless steel 1.4301 (V2A) similar to AISI 304; M14

SPANNER PLATE: Stainless steel 1.4301 (V2A) similar to AISI 304, vulcanized into the seal

SEAL: Stainless steel sealing clamps with EDPM seal for drinking water or NBR seal for gas.



Item no.: 50.03.20.1
(with NBR seal)

Item no.: 51.03.20.1
(with EPDM-seal)

Pipe outer-Ø (mm-)	Pressure level (bar-)	
	Water	Gas
48 – 95	16	5
88 – 170	16	4

Item No.
50.03.20.1 (with NBR seal)
51.03.20.1 (with EPDM seal)

CONTENT MAXI BOX S

Stainless steel clamps Unifix Maxi

- 1 piece UNIFIX MAXI 60 – 67 mm
- 1 piece UNIFIX MAXI 70 – 77 mm
- 1 piece UNIFIX MAXI 82 – 90 mm
- 1 piece UNIFIX MAXI 90 – 98 mm
- 1 piece UNIFIX MAXI 98 – 108 mm
- 1 piece UNIFIX MAXI 108 – 118 mm
- 1 piece UNIFIX MAXI 118 – 128 mm
- 1 piece UNIFIX MAXI 132 – 144 mm
- 1 piece UNIFIX MAXI 159 – 170 mm

Maxi 1	DN Nominal Width	Inch				Fibre cement pipe				
			Cast iron	Steel	PVC	PN 2.5	PN 6	PN 10	PN 12.5 cal.	PN 12.5 non cal.
			Pipe Outer-Ø (mm)							
60 – 67	50	2	66	60.3	63	–	–	–	–	–
70 – 77	60	–	77	70.0	–	–	–	–	–	–
	65	2 1/2	–	76.1	75	–	–	–	–	–
82 – 90	65	2 1/2	82	–	–	–	–	–	83	85
	70	–	87	–	–	–	–	–	–	–
90 – 98	80	3	98	88.9	90	–	–	98	–	–
98 – 108	80	3	–	–	–	–	–	–	100	104
	90	–	108	101.6	–	–	–	–	–	–
108 – 118	100	4	118	108 / 114.3	110	–	–	–	–	–
118 – 128	100	4	–	–	–	–	118	120	124	130
132 – 144	125	–	144	133 / 139.7	140	–	–	–	–	–
159 – 170	125	–	–	–	–	–	–	–	–	159
	150	6	170	159 / 168.3	160	168	–	–	–	–

UNIFIX-MAXI BOX L

Our **most flexible repair box**.

44 different repair facilities with Gebo Unifix stainless steel clamps for all types of pipe from 48 mm to 359 mm outside-Ø – **ALL IN ONE BOX!**

SUITABLE FOR

STEEL PIPE | CAST IRON PIPE | DUCTILE CAST IRON PIPE | FIBRE CEMENT PIPE

PE-PIPE | PVC-PIPE

COLD WATER AREA

ABOUT OUR UNIFIX MAXI BOX L

This repair set includes a total of 20 sealing clamps and the corresponding spanner plates

DIMENSIONS OF THE BOX: 800 x 600 x 600 mm

A „modular system“ for repairs to be made on pipes with a diameter of 48 - 359 mm

Each sealing clamp can be used individually or connected to another sealing clamp, creating one, two or three part sealing clamps. The concept is to combine the various sealing clamps to allow the desired outside pipe diameter to be sealed

THE INSTALLATION LENGTH OF THE CLAMPS IS GENERALLY 300 MM

BOLTS: Stainless steel 1.4301 (V2A) similar to AISI 304, M14

SPANNER PLATES: Stainless steel 1.4301 (V2A) similar to AISI 304

SEAL: The Seal is available as EPDM for drinking water or NBR for gas. It features honeycombed structure and bevelled ends.

PRESSURE LEVELS: The pressure levels vary depending on the number of elements used and the different outside pipe diameters.

The values contained in the tables are therefore solely intended as a guideline:

Pipe Outer-Ø (mm)	Pressure level (bar)	
	Water	Gas
48– 95	16	5
88–282	16	4
282–359	10	3

Item No.
50.03.30.1 (with NBR seal)
51.03.30.1 (with EPDM seal)



Item no.: 50.03.30.1
(with NBR seal)

Item no.: 51.03.30.1
(with EPDM seal)

Content Maxi Box L

Stainless steel clamps Unifix Maxi

- 3 pieces UNIFIX MAXI 48 – 55 mm (section 1)
- 3 pieces UNIFIX MAXI 52 – 59 mm (section 2)
- 3 pieces UNIFIX MAXI 60 – 67 mm (section 3)
- 3 pieces UNIFIX MAXI 70 – 77 mm (section 4)
- 3 pieces UNIFIX MAXI 82 – 90 mm (section 5)
- 3 pieces UNIFIX MAXI 90 – 98 mm (section 6)
- 1 piece UNIFIX MAXI 102 – 112 mm (section 7)
- 1 piece UNIFIX MAXI 118 – 128 mm (section 8)

Spanner plates:

- 8 different sizes of spanner plates (5 pieces per size)

Section	Length	Pipe Outer-Ø (mm)	Code
1	300	48– 55	51.03.30.1.1
2	300	52– 59	51.03.30.1.2
3	300	60– 67	51.03.30.1.3
4	300	70– 77	51.03.30.1.4
5	300	82– 90	51.03.30.1.5
6	300	90– 98	51.03.30.1.6
7	300	102–112	51.03.30.1.7
8	300	118–128	51.03.30.1.8

Spanner plates	Code
D	51.03.30.1.D
E	51.03.30.1.E
G	51.03.30.1.G
H	51.03.30.1.H
I	51.03.30.1.I
J	51.03.30.1.J
K	51.03.30.1.K
L	51.03.30.1.L

HOW IT WORKS

EASY
GRIP

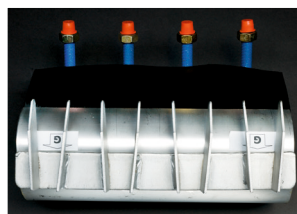
Take the outside diameter of the damaged pipe.

Select the right combination of the stainless steel bands and the suitable spanner plates (according to the table)

For smaller pipe dimensions the single clamps can be used. Bigger pipe dimensions can be covered by combination of various sealing clamps. All sealing clamps have a length of 300 mm with four bolts.

The spanner plates are available in different sizes. These plates have to choose carefully because they have a special „curvature“ which has to correspond to the “curvature” of the outside pipe diameter which has to be repaired. That is why the spanner plates are separately enclosed and not – as usual – vulcanized into the gasket.

The spanner plates have a double side glued tape, so that they can easily fixed into the clamp.



Put the combined clamp after the assembly together and install – done!

All components of the Maxi Box L can be ordered separately.

Pipe outer-Ø (mm)	Sections	Spanner plates
48– 55	1	D
52– 59	2	D
60– 67	3	E
70– 77	4	E
82– 90	5	G
9 0– 98	6	G
102–112	7	I
106–126	1 + 1	2 x H
112–132	2 + 1	2 x I
118–128	8	I
118–138	2 + 2	2 x I
124–144	3 + 2	2 x J
130–150	3 + 3	2 x J
140–160	4 + 3	2 x J
150–170	4 + 4	2 x J
163–183	5 + 4	2 x K
164–194	1 + 1 + 1	3 x K
170–200	2 + 1 + 1	3 x K
176–196	5 + 5	2 x K
176–206	2 + 2 + 1	3 x K
182–202	6 + 5	2 x K
182–212	2 + 2 + 2	3 x K

Pipe outer-Ø (mm)	Sections	Spanner plates
188–208	6 + 6	2 x K
188–218	3 + 2 + 2	3 x K
194–224	3 + 3 + 2	3 x K
195–215	7 + 5	2 x K
200–230	3 + 3 + 3	3 x K
201–231	7 + 6	2 x K
210–240	4 + 3 + 3	3 x K
217–237	8 + 6	2 x L
220–250	4 + 4 + 3	3 x L
230–250	8 + 7	2 x L
230–260	4 + 4 + 4	3 x L
243–273	5 + 4 + 4	3 x L
256–286	5 + 5 + 4	3 x L
269–299	5 + 5 + 5	3 x L
275–305	6 + 5 + 5	3 x L
281–311	6 + 6 + 5	3 x L
287–317	6 + 6 + 6	3 x L
288–318	7 + 5 + 5	3 x L
294–324	7 + 6 + 5	3 x L
300–330	7 + 6 + 6	3 x L
316–346	8 + 6 + 6	3 x L
329–359	8 + 7 + 6	3 x L

UNIFIX MAXI BOX XL

Our **greatest** repair box.

Five different sizes of Unifix Maxi repair clamps for the repair of various pipe materials from 90 - 669 mm outside-Ø – ALL IN ONE BOX!

SUITABLE FOR

STEEL PIPE | CAST IRON PIPE | DUKTILE CAST IRON PIPE | FIBRE CEMENT PIPE

PE-PIPE | PVC-PIPE

COLD WATER AREA

ABOUT OUR MAXI BOX XL

The concept works like this: repair various outside pipe diameters by connecting the various sections contained in the Maxi XL Box

The sections [A – E] can be used also separately for the corresponding pipe diameter

Dimensions of the box: 800 x 600 x 600 mm

The installation length of the sealing clamps is generally 400 mm.

Tip: Using the content of two Maxi XL boxes you can also repair pipes up to an outside pipe diameter of 1086 mm. And the box even has enough space to hold twice its content.

Materials: Sealing clamps, bolts (M16): Stainless steel 1.4301 (V2A) similar to AISI 304

Seal: The Seal is available as EPDM for drinking water or NBR for gas. It features honeycombed structure and bevelled ends.

Pressure levels: The pressure levels vary depending on the number of elements used and further depend on the different outside pipe diameters and the kind of damage.

Therefore all figures are „guidelines“:

Pipe outer-Ø [mm]	Pressure level (bar)	
	Water	Gas
213– 282	16	4
282– 460	10	3
460– 630	6	2
630– 813	4	1
813–1086	2	0,5

Item no.
50.03.40.1 (with NBR seal)
51.03.40.1 (with EPDM seal)



Content Maxi Box XL

STAINLESS STEEL CLAMPS UNIFIX MAXI

- 1 piece UNIFIX MAXI 90 – 98 mm (section A)
- 1 piece UNIFIX MAXI 111 – 121 mm (section B)
- 1 piece UNIFIX MAXI 131 – 141 mm (section C)
- 1 piece UNIFIX MAXI 160 – 170 mm (section D)
- 1 piece UNIFIX MAXI 190 – 200 mm (section E)

HOW IT WORKS

Take the outside diameter of the damaged pipe.

Select the right combination of the stainless steel bands (according to the table), available in each box and hook them into.

Mount it – done!

REPAIRS WITH MAXI BOX XL (SINGLE EQUIPMENT)

Area / Pipe outer-Ø (mm)	Sections
213-233	A + B
233-253	A + C
253-273	B + C
264-284	A + D
284-304	B + D
294-314	A + E
304-324	C + D
314-334	B + E
335-355	C + E
354-384	A + B + C
386-416	A + B + D
406-436	A + C + D
416-446	A + B + E
426-456	B + C + D
436-466	A + C + E
456-486	B + C + E
467-497	A + D + E
487-517	B + D + E
508-538	C + D + E
527-567	A + B + C + D
558-598	A + B + C + E
589-629	A + B + D + E
609-649	A + C + D + E
629-669	B + C + D + E

REPAIR WITH A „DOUBLE EQUIPMENT“ OF MAXI BOX XL

Area / Pipe outer-Ø (mm)	Sections
694- 744	E + E + B + A + A
728- 778	E + E + C + B + A
796- 846	E + E + D + C + B
816- 866	E + E + D + C + C
894- 954	E + E + D + C + B + A
928- 988	E + E + D + D + B + A
982-1042	E + E + D + D + C + C
1026-1086	E + E + D + C + C + B + A

Install them according to the assembly instruction – done!

If a stainless steel clamp of Maxi Box XL is used up it can be ordered separately.

ASSEMBLY INSTRUCTIONS FOR UNIFIX MAXI CLAMPS WITH THE EASYGRIP EASY INSIDE FUNCTION

Assembly instructions for Unifix Maxi clamps with the Easygrip Easy Inside function

Preparation:

1. Clean the pipe around the damaged.
2. Make sure that the pipe outer diameter corresponds to the range for the respective sealing clamp.
3. The sealing and the pipe can be moistened with soapy water to increase the assembly efficiency.
Mixing ratio (soap 1:5: water)

Assembly steps:

1. Loosen nuts to the red thread protection caps (do not remove). Pull up the stainless steel bridge and bend the clamp apart. Position the clamp over the pipe (image 1).
2. Hook the bridge into the Easygrip notch of the side bar (image 2).
Then pull the bridge higher, so that the bridge lies on the ends of the side bars (image 3).
3. Take a combination wrench and place it in the Easygrip notch of the side bars (image 4).
Simultaneously grab the combination wrench and the lower bar of the clamp and pull them together.
You may now easily raise the bridge to its final position. The nuts can now easily be hand tightened. Be sure the rubber seal neatly rests on the pipe.
4. Remove the combination wrench from the Easygrip notch and evenly hand tighten the nuts. Now evenly tighten the nuts with a torque wrench – at M12 and M14 to 70 Nm and 120 Nm for M16 for steel, cast iron and fibre cement pipes.
For PVC pipes the torque may only be approx. 50 Nm. After approx. 15–20 minutes retighten the nuts using the same torque setting.

For PE pipe please note the following information:

Recheck whether the installation length of the clamp was calculated correctly (installation length calculation see page XX)!

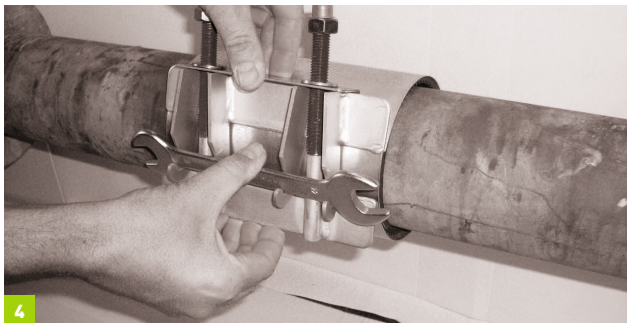
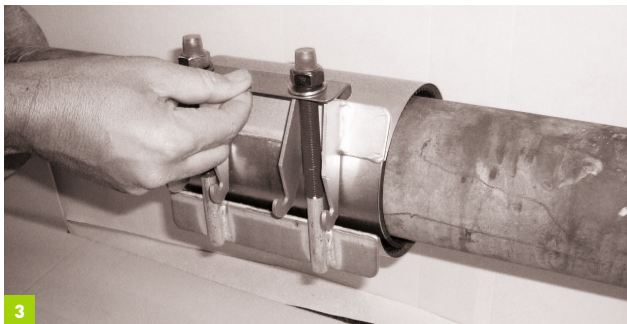
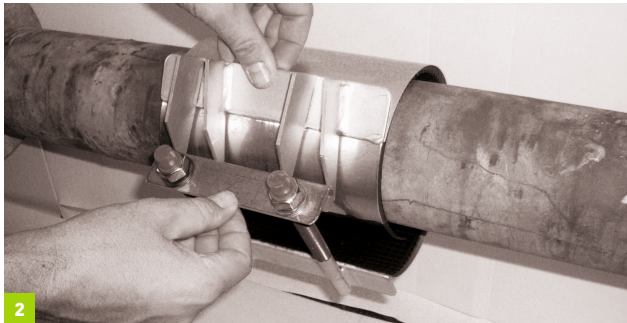
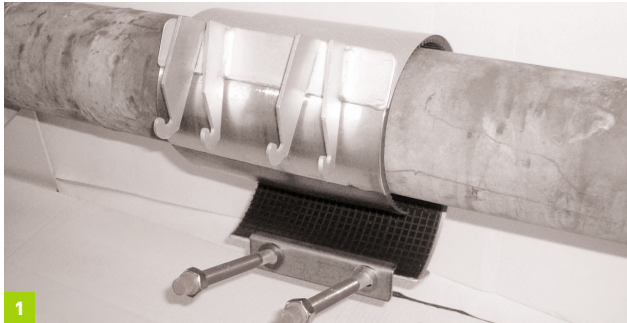
After the initial hand tightening, the nuts are tightened with a torque of 70 Nm at M12 and M14, and 120 Nm at M16. Then wait 15 minutes and retighten with the specified torque. After a repeated waiting period of 15 minutes retighten again.

If possible, retighten the nuts with the specified torque after a 24 hour waiting period.

5. The same method may be used for multi part repair clamps and / or repair clamps with threaded or flanged outlet. With multi part versions it is not necessary to open more than one clamp side.

Note:

1. Make sure that there is no dirt between the pipe and the stainless steel clamp.
2. Despite the teflon coated bolts and the passivated nuts, the closure must be kept as clean as possible to prevent the nuts and bolts from seizing.
3. Installation steps 1 to 3 can also be carried out next to the damaged area. Then, the pre-assembled clamp should be pushed onto the damaged area and fixed as described in step 4.



HOW TO FIND THE CORRECT ARTICLE NUMBER?

All GEBO article numbers have a specific meaning.

This means that the article number contains precise information about the product type/version, size and material of the product.

The article numbers form a modular system. This is an example:

AN EXAMPLE OF A PRODUCT NUMBER AND EXPLANATION:

51	Sealing clamp of stainless steel V2A with EPDM seal
06	Type Maxi, one-part, with female thread outlet
120131	pipe outer diameter: from 120 to 131 mm
20	length 200 mm
5	threaded outlet 1 1/2"

ALTOGETHER, IT LOOKS LIKE THIS:

51 . 06 . 120131 . 20 . 5

EXAMPLE: ITEM NUMBER CONFIGURATION FOR A MINI

- ① Stainless steel sealing clamp made of V2A with EPDM seal
- ② Type Mini
- ③ For outside pipe-Ø from/to: 21–25 mm
- ④ Installation length: 100 mm

51 . 01 . 021025 . 10

EXAMPLE: ITEM NUMBER CONFIGURATION FOR A MAXI

- ① Stainless steel sealing clamp made of V2A with EPDM seal
- ② Type Maxi 1 with female thread
- ③ For outside pipe-Ø from/to: 82–89 mm
- ④ Installation length: 150 mm
- ⑤ Threaded outlet: 1"

51 . 06 . 082089 . 15 . 3

SEAL MATERIALS	DIFFERENT TYPES	DIMENSIONS	INSTALLATION LENGTH	THREADED OUTLET
50 V2A with NBR	01 Mini	***** from*** to***	06 60 mm	1 ½"
51 V2A with EPDM	02 Middle		10 100 mm	2 ¾"
52 V2A with Viton	03 Maxi 1		15 150 mm	3 1"
56 Slim with NBR	04 Maxi 2		20 200 mm	4 1 ¼"
57 Slim with EPDM	05 Maxi 3		30 300 mm	5 1 ½"
58 Slim with Viton	06 Maxi 1 (female thread)		40 400 mm	6 2"
59 V4A with NBR	07 Maxi 2 (female thread)		50 500 mm	7 2 ½"
60 V4A with EPDM	08 Maxi 3 (female thread)		60 600 mm	8 3"
61 V4A with Viton	09 Maxi 1 (male thread)		70 700 mm	9 4"
	10 Maxi 2 (male thread)			
	11 Maxi 3 (male thread)			
	12 Maxi 1 (female/male thread)			
	13 Maxi 2 (female/male thread)			
	14 Maxi 3 (female/male thread)			
	15 Maxi 2 (flange connector)			
	16 Maxi 3 (flange connector)			
	19 Holders			
	21 Tapping Saddles			
				FLANGE OUTLET
				a DN 50
				b DN 65
				c DN 80 Plus
				d DN 80
				e DN 100 Plus
				f DN 100
				g DN 125
				h DN 150 Plus
				i DN 150
				j DN 200 Plus
				k DN 200
				l DN 250

In Unifix without threaded or flanged outlets omit the section indicated in green.

DIMENSION TABLE FOR PRESSURE PIPES

DN PIPE TYPE	THREADED STEEL PIPE	STEEL-BLACK STEEL PIPE	STEEL PIPE WITH PE COVERING	STAINLESS STEEL	GRAY CAST IRON PN8/PN16	DUCTILE CAST IRON
40	48.3	51.0	51.9	48.3	56.0	56.0
50	60.3	57.0	63.9	60.3	66.0	66.0
65	76.1	70.0	79.7	76.1	77.0	82.0
80	88.9	88.9	92.5	88.9	98.0	98.0
100	114.3	108.0	117.5	114.3	118.0	118.0
125	139.7	133.0	144.0	139.7	144.0	144.0
150	168.3	159.0	168.3	168.3	170.0	170.0
200	219.1	216.0	219.1	219.1	222.0	222.0
250	273.0	267.0	273.0	273.0	274.0	274.0
300	323.9	318.0	323.9	323.9	326.0	326.0
350	355.6	368.0	360.0		378.0	378.0
400	406.4	419.0	410.8		429.0	429.0
450	457.0		461.4		480.0	480.0
500	508.0		513.0		532.0	532.0
			564.0		583.0	
600	610.0		615.0		634.0	635.0
			665.0			
700	711.0		716.0		738.0	738.0
			767.0			
800	813.0		819.0		842.0	842.0
			870.0			
900	914.0		920.0		945.0	945.0
1000	1016.0		1022.0		1048.0	1048.0

DIMENSION TABLE FOR PRESSURE PIPES

DN PIPE TYPE	PE	PVC	PE-Xa	FIBRE-CEMENT PIPES			
				PN 10	PN 10	PN 12.5	PN 12.5
				cal.	uncal.	cal.	uncal.
40	50.0	50.0	50.0				
50	63.0	63.0	63.0				
65	75.0	75.0	75.0			83.0	85.0
80	90.0	90.0	90.0	98.0	102.0	100.0	104.0
100	110.0	110.0	110.0	120.0	128.0	124.0	130.0
	125.0	125.0	125.0				
125	140.0	140.0	140.0	149.0	154.0	153.0	159.0
150	160.0	160.0	160.0	178.0	184.0	182.0	190.0
	180.0	180.0	180.0				
200	200.0	200.0	200.0	234.0	243.0	240.0	252.0
	225.0	225.0	225.0				
250	250.0	250.0	250.0	286.0	288.0	296.0	308.0
	280.0	280.0	280.0				
300	315.0	315.0	315.0	342.0	346.0	352.0	368.0
350	355.0	355.0	355.0	400.0	404.0	410.0	428.0
400	400.0	400.0	400.0	456.0	460.0	470.0	488.0
450	450.0	450.0	450.0	510.0		524.0	546.0
500	500.0	500.0	500.0	564.0		582.0	606.0
	560.0	560.0	560.0				
600	630.0	630.0	630.0	678.0		698.0	726.0
700	710.0	710.0	710.0		792.0		
800	800.0	800.0	800.0				
900	900.0	900.0	900.0				
1000	1000.0	1000.0	1000.0		1126.0		